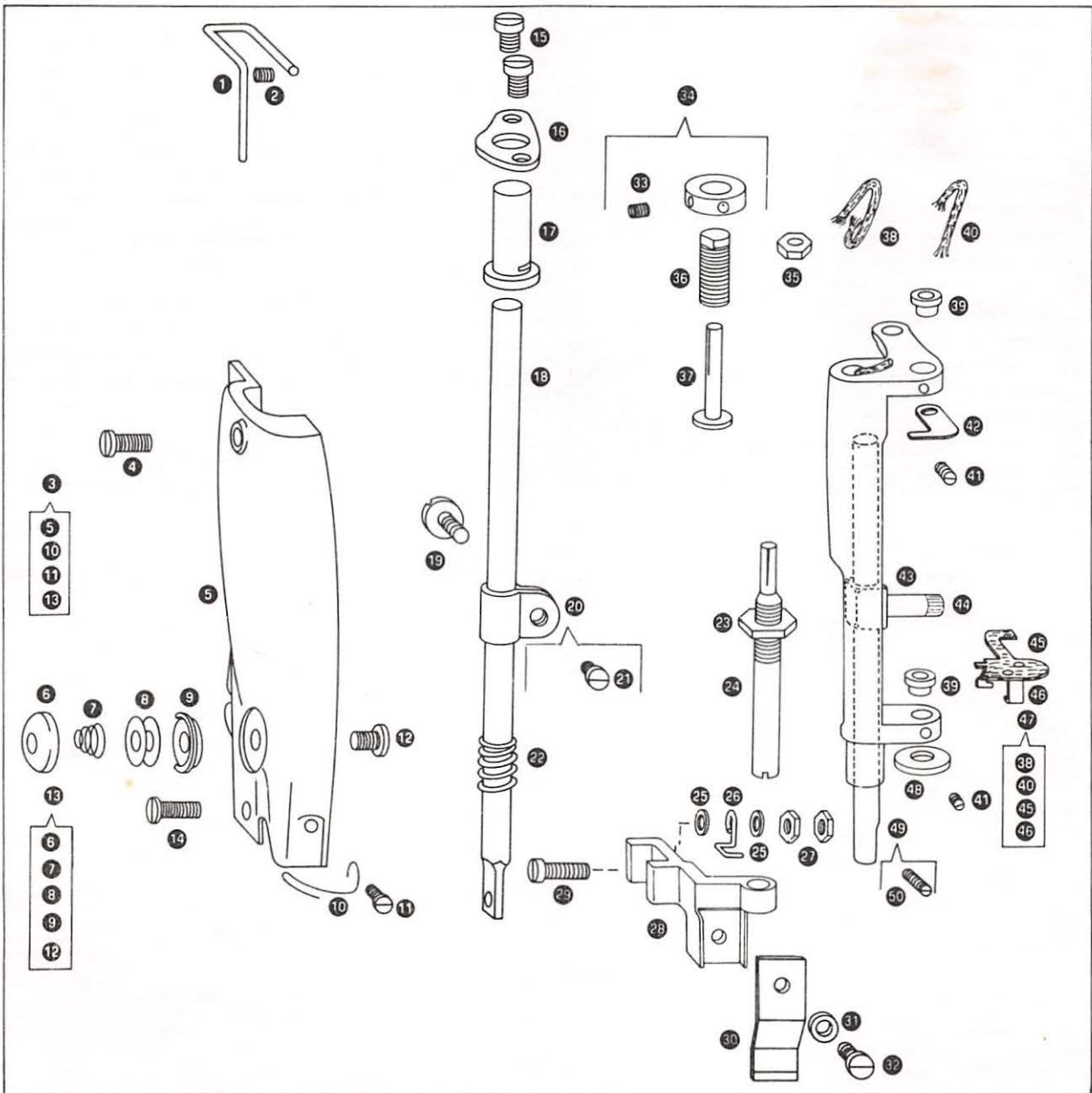
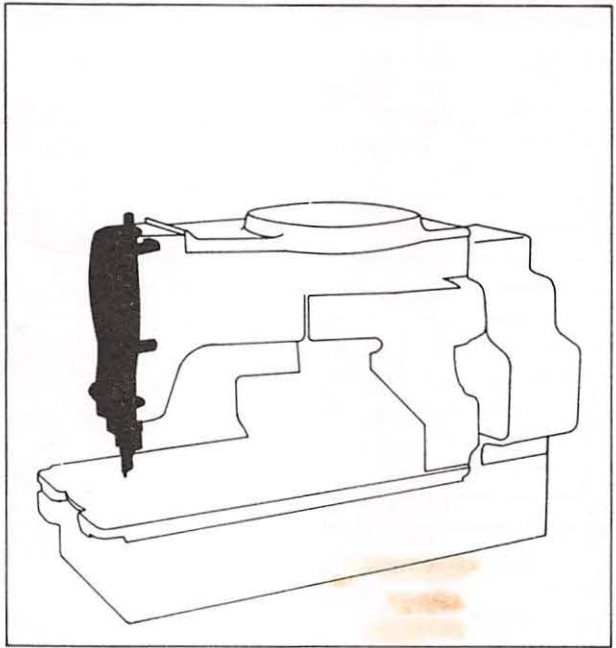


PARTS LIST 271K12

THE SINGER COMPANY

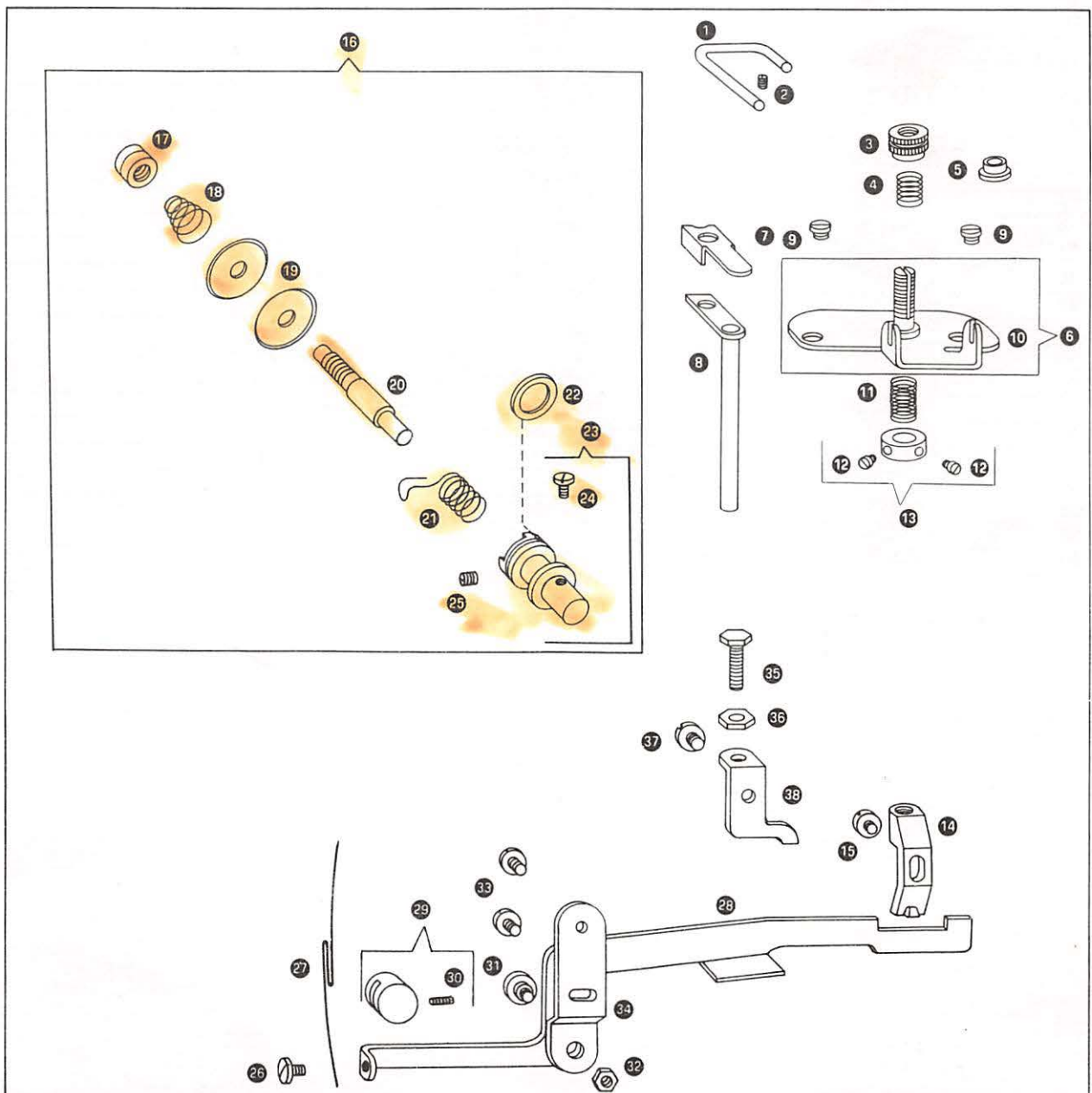
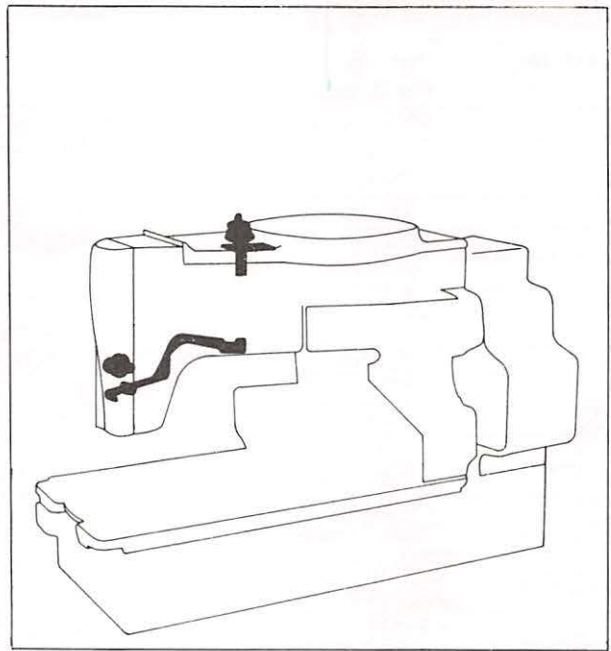
Parts List for 271K12 Machine

Ref. No.	Part No. For Ordering	Description	Amt. Req.
1	23669	Thread Guide (side of arm) (lower)	
2	1019(830)	Thread Guide (side of arm) (lower) Set Screw	
3	271500	Face Plate with 1423(806), 271667 and 271692	
4	140040(809)	Face Plate Screw (upper)	
5	271486	Face Plate	
6	9544(839)	Thread Check Cap	
7	9545-001	Thread Check Spring	
8	9543	Thread Check Disc	2
9	271666	Thread Check Bracket	
10	271692	Thread Guide (on Face Plate)	
11	1423(806)	Thread Guide (on Face Plate) Screw	
12	208(830)	Thread Check Screw	
13	271667	Thread Check Complete	
14	330(804)	Face Plate Screw (lower)	
15	168(804)	Knife Bar Stop Retainer Plate Screw	2
16	249545	Knife Bar Stop Retainer Plate	
17	249544	Knife Bar Stop	
18	23460	Knife Bar	
19	1239(804)	Knife Bar Connecting Link Cap Screw	
20	271915	Knife Bar Connecting Stud with 1319(806)	
21	1319(806)	Knife Bar Connecting Stud Clamping Screw	
22	271494	Knife Bar Spring	
23	1608(803)	Knife Holder Guide Stud Nut	
24	98968	Knife Holder Guide Stud	
25	49109	Knife Holder and Needle Thread Pull-off Roller Arm Bracket Screw Washer	2
26	98952	Needle Thread Guide (lower)	
27	1547(819)	Knife Holder and Needle Thread Pull-off Roller Arm Bracket Screw Nut	2
28	271470	Knife Holder	
29	109060(830)	Knife Holder and Needle Thread Pull-off Roller Arm Bracket Screw	
30	98735	Knife for 1/2 inch Buttonhole	
31	23390	Knife Screw Washer	
32	191(806)	Knife Screw	
33	141087(869)	Needle Bar Frame Stud Collar Set Screw	2
34	271445	Needle Bar Frame Stud Collar with two 141087(850)	
35	1517(804)	Needle Bar Frame Stud Sleeve Nut	
36	271444	Needle Bar Frame Stud Sleeve	
37	271442	Needle Bar Frame Stud	
38	270200	Needle Bar Oiling Wick	
39	108216	Needle Bar Frame Stud Bushing	2
40	241189	Thread Take-up Lever Oil Packing Wick	
41	350562(869)	Needle Bar Frame Stud Bushing Set Screw	2
42	271607	Needle Bar Frame Oiling Felt (upper)	
43	98965	Needle Bar Connecting Stud with 114003	
44	114003(833)	Needle Bar Connecting Stud Set Screw	
45	271610	Needle Bar Oiling Felt	
46	271611	Needle Bar Oiling Felt Retainer	
47	98966	Needle Bar Frame with 241189, 270200, 271610 and 271611	
48	271606	Needle Bar Frame Oiling Felt (lower)	
49	98961	Needle Bar with 336(804)	
50	336(804)	Needle Set Screw	



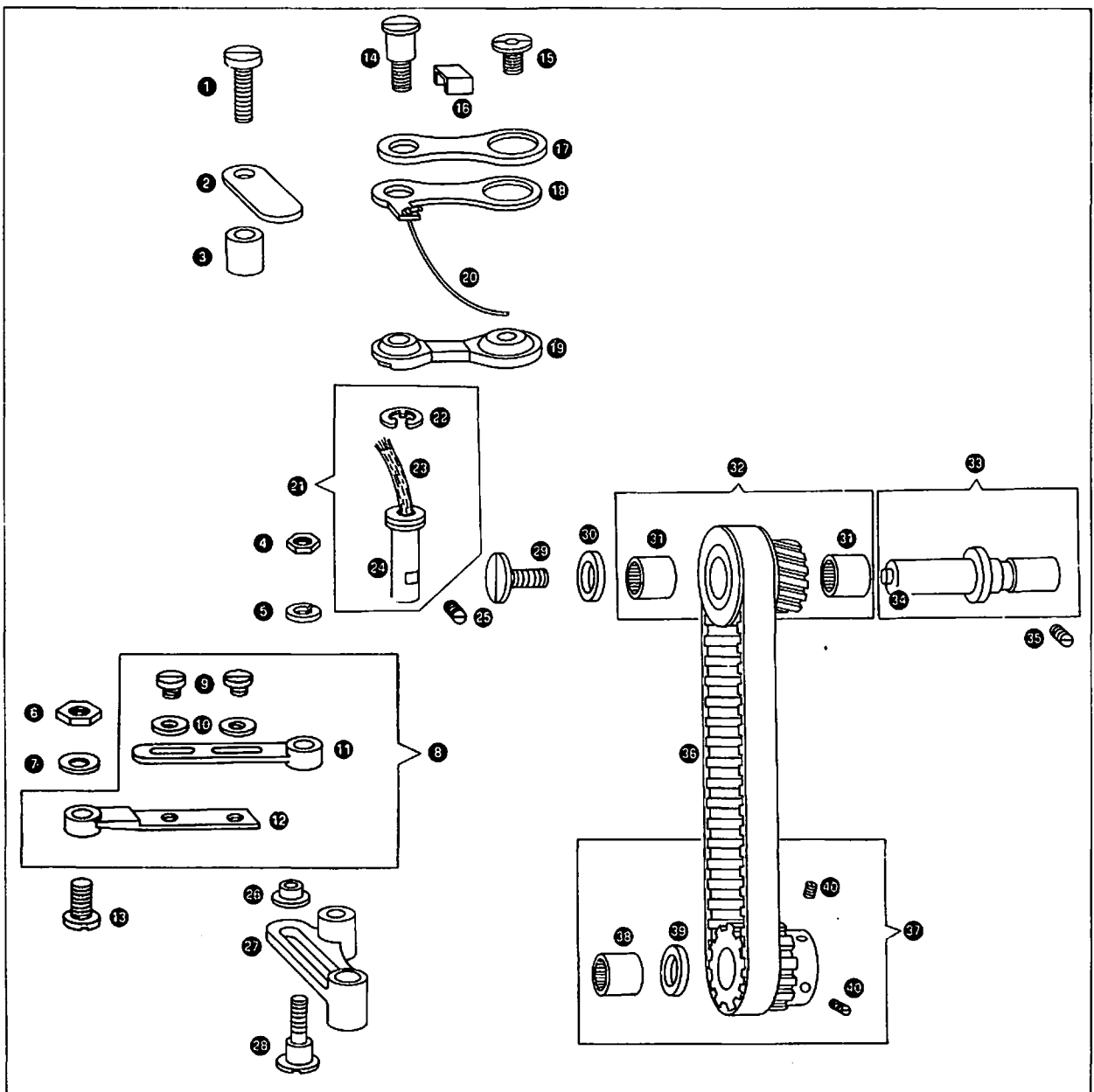
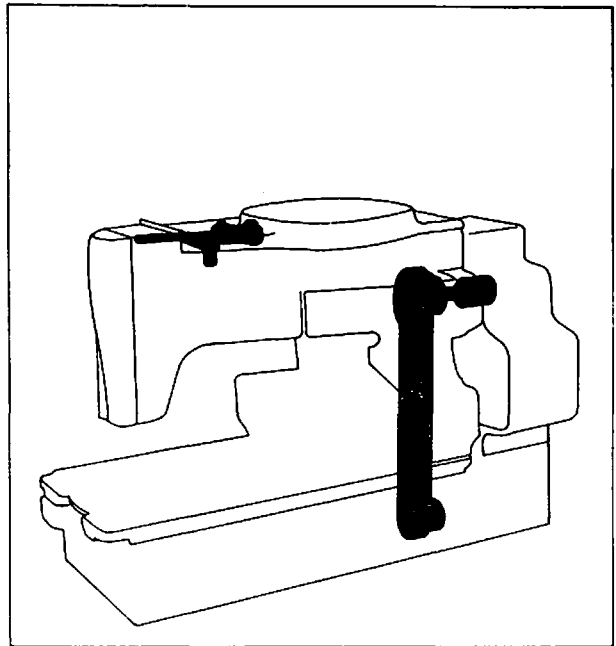
Parts List for 271K12 Machine

Ref. No.	Part No. For Ordering	Description	Amt. Req.
1	39711	Thread Guide (side of arm) (upper)	
2	460(830)	Thread Guide (side of arm) (upper) Set Screw	
3	1562	Barring Tension Spring Regulating Nut	
4	271414	Barring Tension Spring	
5	12400	Barring Tension Spring Guide	
6	141628	Barring Tension Screw Stud	
7	271842	Barring Tension Plate (upper)	
8	271841	Barring Tension Plate (lower)	
9	190(804)	Barring Tension Support Bracket Screw	2
10	271843	Barring Tension Support Bracket with 141628	
11	271691	Barring Tension Plate (lower) Spring	
12	209(831)	Barring Tension Plate (lower) Collar Set Screw	2
13	40043	Barring Tension Plate (lower) Collar with two 209(831)	
14	271929	Barring Point	
15	191(806)	Barring Point Screw	
16	271658	Tension (side of arm) complete	
17	1560(806)	Tension (side of arm) Regulating Thumb Nut	
18	8238	Tension (side of arm) Spring	
19	2102	Tension (side of arm) Disc	2
20	1043(806)	Tension (side of arm) Screw Stud	
21	39652	Thread Take-up Spring	
22	271701	Thread Take-up Spring Regulator Oil Seal Ring (rubber)	
23	271700	Thread Take-up Spring Regulator with 237(804)	
24	237(804)	Tension (side of arm) Screw Stud Set Screw	
25	446(833)	Thread Take-up Spring Regulator Set Screw	
26	1443(806)	Automatic Knife Disengaging Lever Thread Guide Screw	
27	271410	Automatic Knife Disengaging Lever Thread Guide	
28	271408	Automatic Knife Disengaging Lever	
29	271428	Automatic Knife Disengaging Lever Balance Weight with 140490(833)	
30	140490(833)	Automatic Knife Disengaging Lever Balance Weight Set Screw	
31	974(806)	Automatic Knife Disengaging Lever Hinge Screw	
32	1698(803)	Automatic Knife Disengaging Lever Hinge Screw Nut	
33	161(804)	Automatic Knife Disengaging Lever Bracket Screw	2
34	271782	Automatic Knife Disengaging Lever Bracket	
35	141623(803)	Bight Stitch Adjusting Point Adjusting Screw	
36	1550(803)	Bight Stitch Adjusting Point Adjusting Screw Nut	
37	350287	Bight Stitch Adjusting Point Screw	
38	271844	Bight Stitch Adjusting Point	



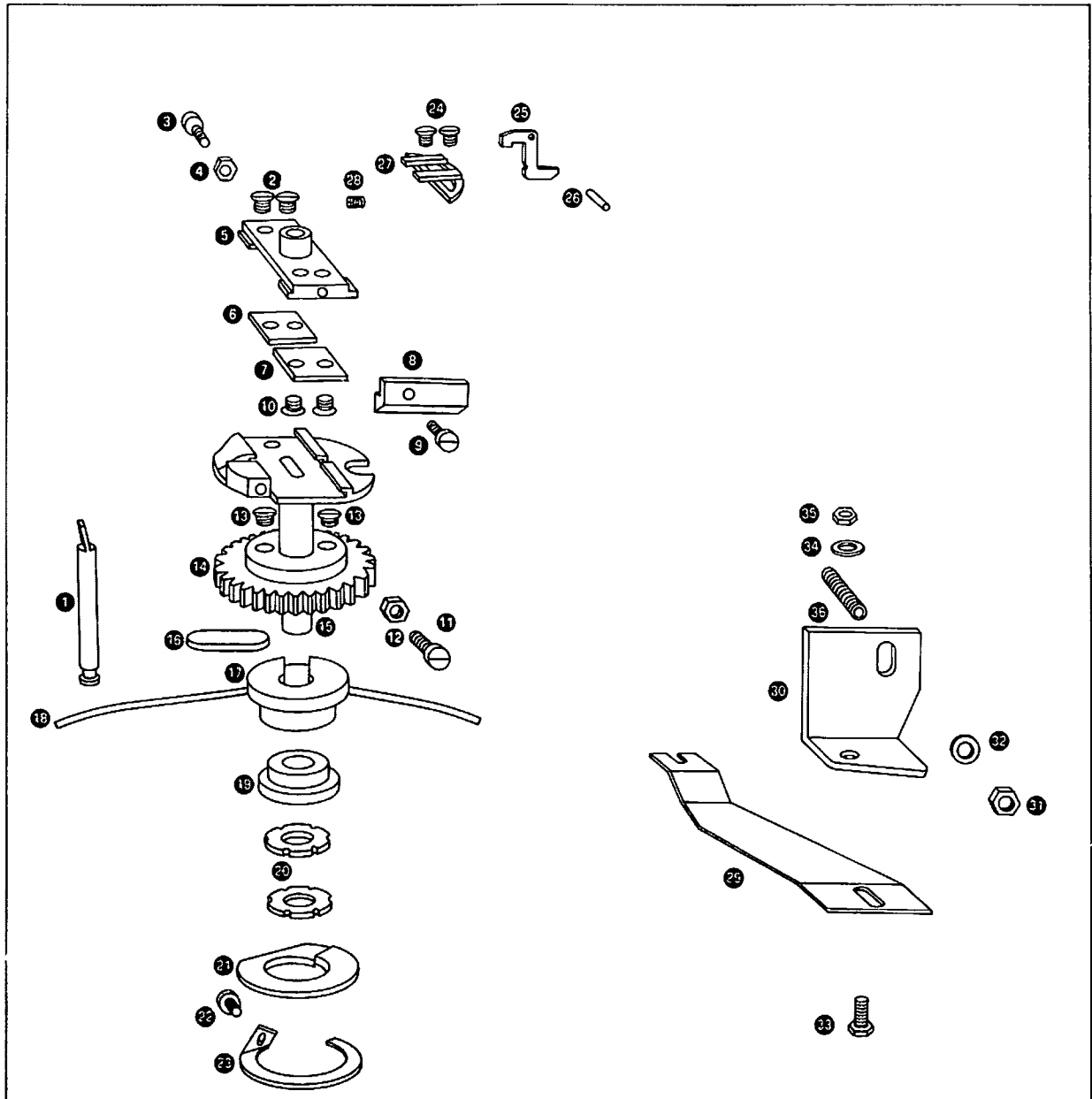
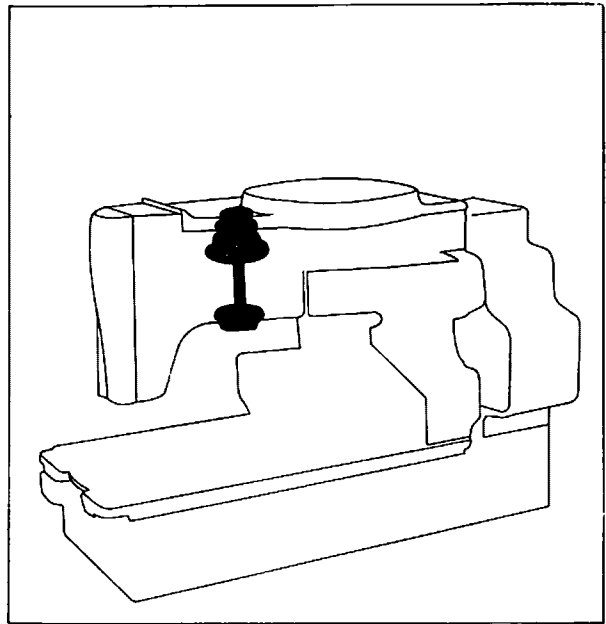
Parts List for 271K12 Machine

Ref. No.	Part No. For Ordering	Description	Amt. Req.
1	50172(803)	Barring Tripping Point Lock Screw	
2	271889	Barring Tripping Point	
3	271890	Barring Tripping Point Spacer	
4	1698(803)	Needle Bar Frame Regulator Hub Adjusting Screw Nut	
5	39504	Needle Bar Frame Regulator Hub Adjusting Screw Washer	
6	1547(819)	Needle Bar Frame Pitman Hinge Screw Nut	
7	271831	Needle Bar Frame Pitman (hinge screw end) Washer	
8	271966	Needle Bar Frame Pitman (adjustable) complete	
9	190(806)	Needle Bar Frame Pitman Adjusting Screw	2
10	7071	Needle Bar Frame Pitman Adjusting Screw Washer	2
11	271917	Needle Bar Frame Pitman (regulator end)	
12	271918	Needle Bar Frame Pitman (hinge screw end)	
13	141679(803)	Needle Bar Frame Pitman Hinge Screw	
14	141549(806)	Needle Bar Frame Connection Hinge Screw	
15	141548(806)	Needle Bar Frame Connection Cap Screw	
16	271771	Needle Bar Frame Connection Oiling Felt Retainer Clamp	
17	271765	Needle Bar Frame Connection Oiling Felt Retainer	
18	271764	Needle Bar Frame Connection Oiling Felt	
19	271604	Needle Bar Frame Connection	
20	271976	Needle Bar Frame Connection Oiling Wick	
21	271608	Needle Bar Frame Regulator Hinge Stud with 262135 and 271609	
22	262135	Needle Bar Frame Regulator Hinge Stud Oil Wick Retainer	
23	271609	Needle Bar Frame Regulator Hinge Stud Oil Wick	
24	262133	Needle Bar Frame Regulator Hinge Stud	
25	446(833)	Needle Bar Frame Regulator Hinge Stud Set Screw	
26	7070	Needle Bar Frame Regulator Hub Adjusting Screw Sleeve	
27	271770	Needle Bar Frame Regulator	
28	1038(803)	Needle Bar Frame Regulator Hub Adjusting Screw	
29	964(804)	Hook Driving Connection Belt Pulley Cap Screw	
30	271754	Hook Driving Connection Belt Pulley Thrust Washer	
31	267093	Hook Driving Connection Belt Pulley Needle Bearing	2
32	271580	Hook Driving Connection Belt Pulley with two 267093	
33	271979	Hook Driving Connection Belt Pulley Stud (eccentric) with 271583	
34	271583	Hook Driving Connection Belt Pulley Stud Oil Packing (wick)	
35	430(830)	Hook Driving Connection Belt Pulley Stud Screw	
36	271578	Hook Driving Connection Belt (reinforced neoprene)	
37	271794	Hook Driving Shaft Connection Belt Pulley with 268425, 271434 and two 140409(830)	
38	268425	Hook Driving Shaft Connection Belt Pulley Needle Bearing	
39	271434	Hook Driving Shaft Thrust Washer	
40	140409(830)	Hook Driving Shaft Connection Belt Pulley Screw	2



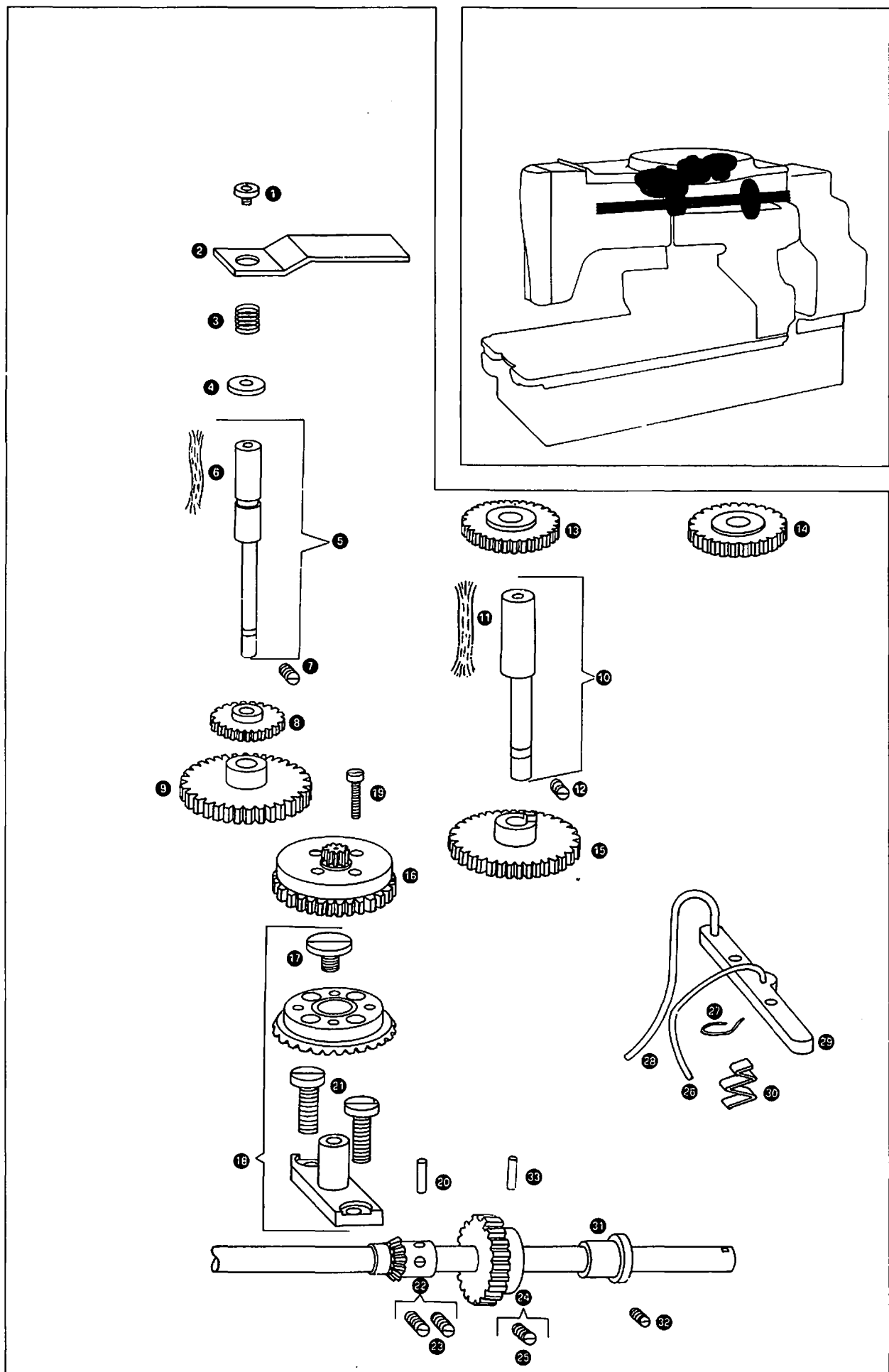
Parts List for 271K12 Machine

Ref. No.	Part No. For Ordering	Description	Amt. Req.
1	271519	Barring Slide Operating Rod	
2	223(804)	Barring Slide Operating Plate (adjustable) Screw	2
3	141564(803)	Barring Slide Operating Plate Adjusting Screw	
4	1607(805)	Barring Slide Operating Plate Adjusting Screw Nut	
5	271796	Barring Slide	
6	271943	Barring Slide Operating Plate (adjustable)	
7	271883	Barring Slide Operating Plate (stationary)	
8	271460	Barring Slide Stop	
9	704(806)	Barring Slide Stop Attaching Screw	
10	228(804)	Barring Slide Operating Plate (stationary) Screw	2
11	141670(805)	Barring Slide Stop Adjusting Screw	
12	1607(805)	Barring Slide Stop Adjusting Screw Nut	
13	51000(805)	Needle Bar Frame Driving Gear Screw	2
14	271605	Needle Bar Frame Driving Gear	
15	271517	Barring Shaft	
16	271518	Barring Shaft Oiling Felt (in Arm)	
17	171774	Barring Shaft Bushing (upper)	
18	271698	Barring Shaft Oiling Wick	
19	271631	Barring Shaft Bushing (lower)	
20	53561(803)	Barring Shaft Adjusting Lock Nut	2
21	271755	Barring Shaft Oiling Felt (lower)	
22	216(804)	Barring Shaft Oiling Felt (lower) Retainer Screw	
23	271756	Barring Shaft Oiling Felt (lower) Retainer	
24	196(805)	Barring Trip Lever Plate Clamping Screw	2
25	271886	Barring Trip Lever	
26	271887	Barring Trip Lever Hinge Pin	
27	271888	Barring Trip Lever Plate	
28	210962	Barring Trip Lever Spring	
29	271411	Barring Slide Operating Rod Spring	
30	271413	Barring Slide Operating Rod Spring Bracket	
31	201784(819)	Barring Slide Operating Rod Spring Bracket Nut	
32	210805	Barring Slide Operating Rod Spring Bracket Washer	
33	350287(806)	Barring Slide Operating Rod Spring Screw	
34	225734	Barring Slide Operating Rod Spring Screw Washer	
35	1698(803)	Barring Slide Operating Rod Spring Screw Nut	
36	114120	Barring Slide Operating Rod Spring Bracket Screw	



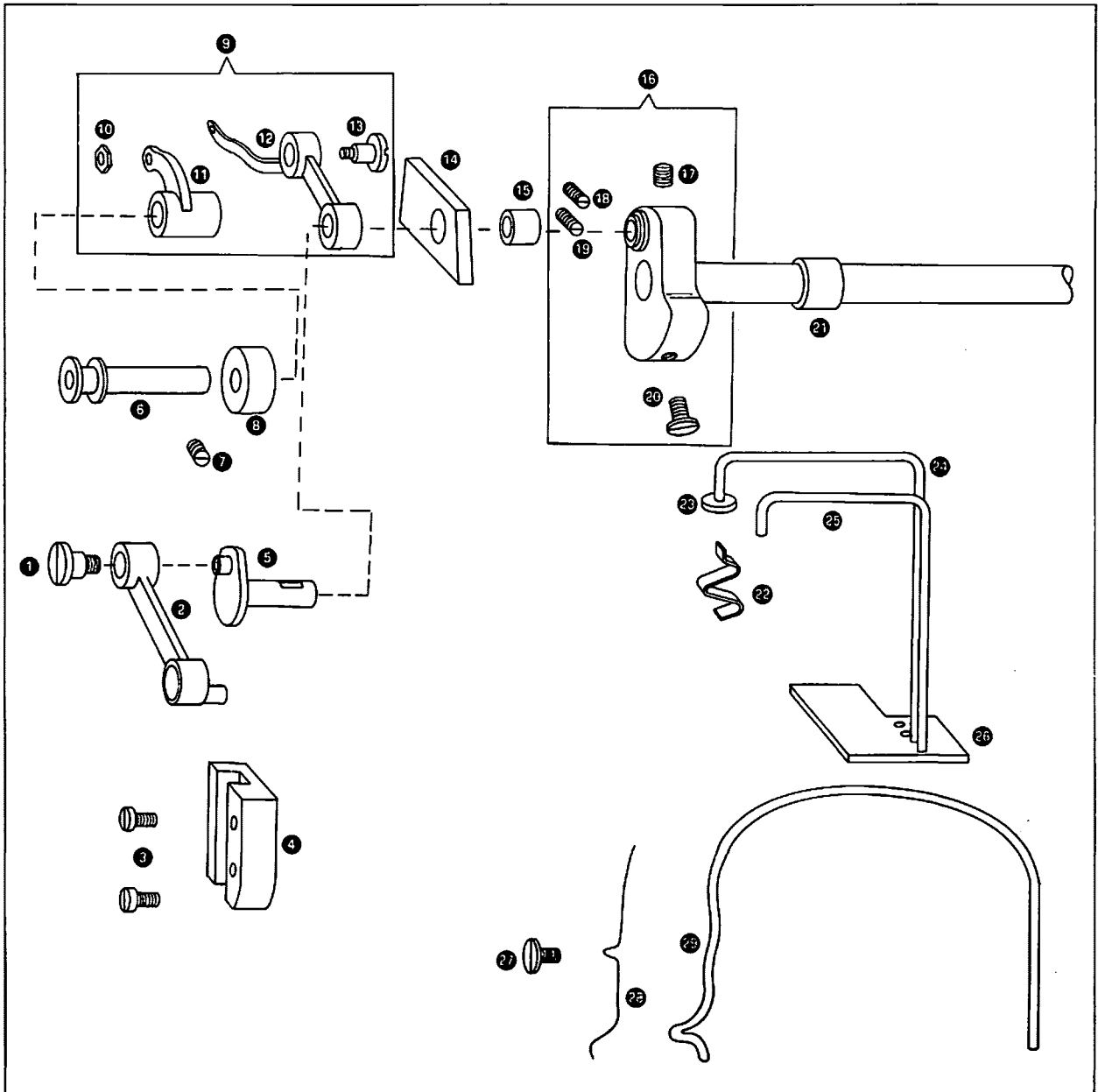
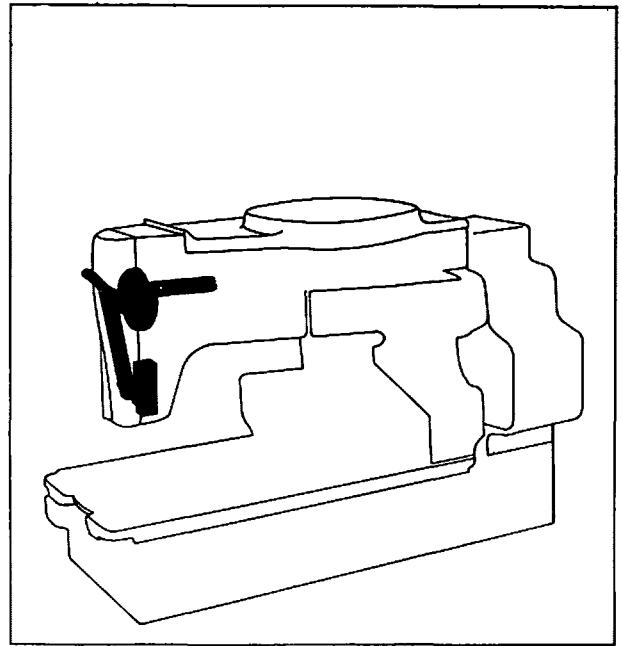
Parts List for 271K12 Machine

Ref. No.	Part No. For Ordering	Description	Amt. Req.
1	141504(819)	Feed Ratchet Gear Compression Spring Cap Screw	
2	271426	Stitch Regulator Gear Retainer	
3	271560	Feed Ratchet Gear Compression Spring	
4	271731	Feed Ratchet Gear Compression Spring Washer	
5	271409	Feed Ratchet Gear (eccentric) Stud with 271562	
6	271562	Feed Ratchet Gear (eccentric) Stud Oil Packing (wick)	
7	350781(830)	Feed Ratchet Gear (eccentric) Stud Set Screw	
8	271855	Feed Ratchet Gear (upper) 24 teeth	
9	271558	Feed Ratchet Gear (lower) 70 teeth	
10	271978	Feed Driving Gear Stud (eccentric) with 263572	
11	263572	Feed Driving Gear Stud (eccentric) Oil Packing (wick)	
12	140930(850)	Feed Driving Gear Stud (eccentric) Set Screw	
13	271639	Stitch Regulating Gear, 40 teeth	
14	271644	Stitch Regulating Gear, 50 teeth	
15	271854	Feed Driving Gear, 72 teeth	
16	271881	Feed Driving Pinion	
17	141546(803)	Feed Driving Bevel Gear Cap Screw	
18	271473	Feed Driving Bevel Gear Bracket with 141546(803) and 271549	
19	971(805)	Feed Driving Pinion Screw	4
20	40025	Feed Driving Bevel Pinion Position Pin	
21	1396(805)	Feed Driving Bevel Gear Bracket Screw	2
22	271750	Feed Driving Bevel Pinion with two 453(830)	
23	453(830)	Feed Driving Bevel Pinion Set Screw	2
24	271584	Hook Driving Connection Belt Pulley Gear with 141600(830)	
25	141600(830)	Hook Driving Connection Belt Pulley Gear Lock Screw	
26	271423	Hook Driving Connection Belt Pulley Oiling Wick	
27	271652	Stop Cam Gear Stud Oiling Wick Clamp	
28	271651	Stop Cam Gear Stud Oiling Wick	
29	271507	Arm Shaft Flanged Bushing (back) Oiling Felt	
30	271508	Arm Shaft Flanged Bushing (back) Oil Packing (wick)	
31	271733	Arm Shaft Flanged Bushing (back)	
32	448(833)	Arm Shaft Flanged Bushing (back) Set Screw	
33	40025	Hook Driving Connection Belt Pulley Gear Position Pin	



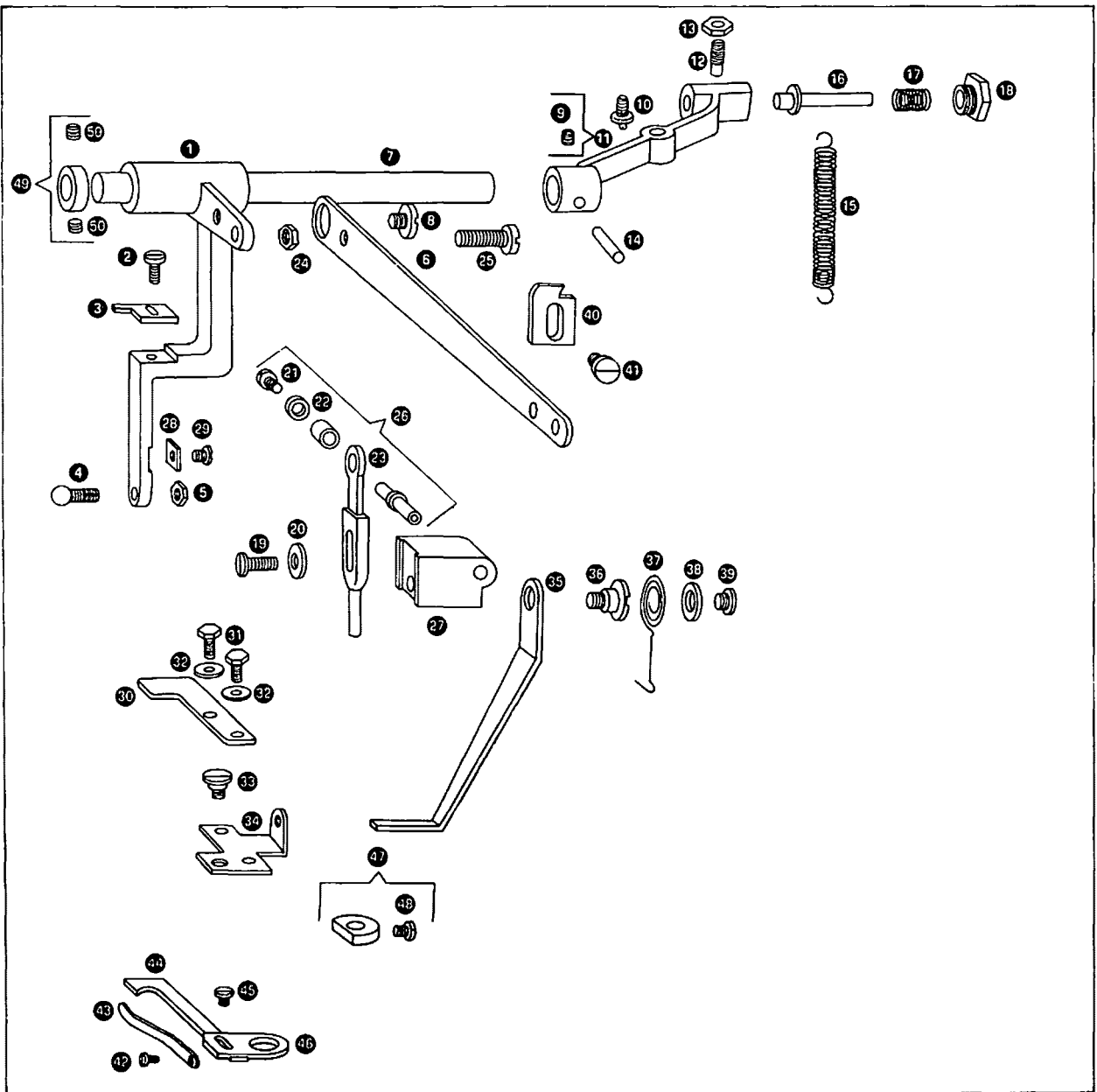
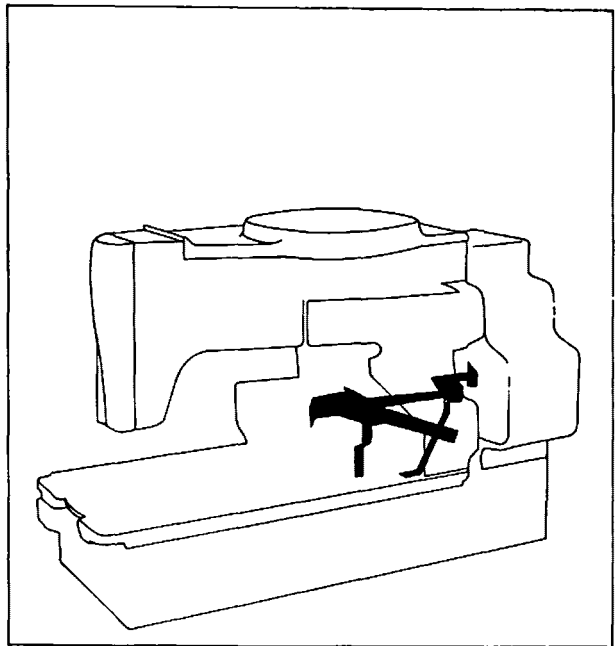
Parts List for 271K12 Machine

Ref. No.	Part No. For Ordering	Description	Amt. Req.
1	1021(805)	Needle Bar Connecting Link Cap Screw	
2	98962	Needle Bar Connecting Link	
3	114002	Needle Bar Connecting Link Guide Block Screw	2
4	98964	Needle Bar Connecting Link Guide Block with two 114002	
5	271694	Thread Take-up Crank	
6	262138	Thread Take-up Lever Link Hinge Pin	
7	435(833)	Thread Take-up Lever Link Hinge Pin Set Screw	
8	271790	Thread Take-up Lever Link Hinge Pin Oiling Felt	
9	271699	Thread Take-up Lever complete	
10	1521(804)	Thread Take-up Lever Adjusting Screw Nut	
11	271793	Thread Take-up Lever Link	
12	271696	Thread Take-up Lever	
13	141562(803)	Thread Take-up Lever Adjusting Screw	
14	271975	Thread Take-up Lever Link Oiling Felt	
15	271599	Thread Take-up Lever Link Hinge Pin Oiling Felt Washer	
16	271760	Needle Bar Crank with 858(830), 1065(830) and two 141275(869)	
17	141275(869)	Thread Take-up Crank Position Screw	
18	141275(869)	Thread Take-up Crank Set Screw	
19	858(830)	Needle Bar Crank Set Screw	
20	1065(830)	Needle Bar Crank Position Screw	
21	271506	Arm Shaft	
22	271508	Arm Shaft Bushing (front) Oil Packing (wick)	
23	271509	Arm Shaft Bushing (front) Oiling Felt	
24	235706	Arm Shaft Bushing (front) Oil Wick	
25	271651	Thread Take-up Lever Link Hinge Pin Oil Wick	
26	271505	Arm Reservoir Oiling Felt	
27	190(804)	Arm Oil Wick Retainer Screw	
28	271503	Arm Oil Wick Retainer	
29	271502	Arm Oil Wick	



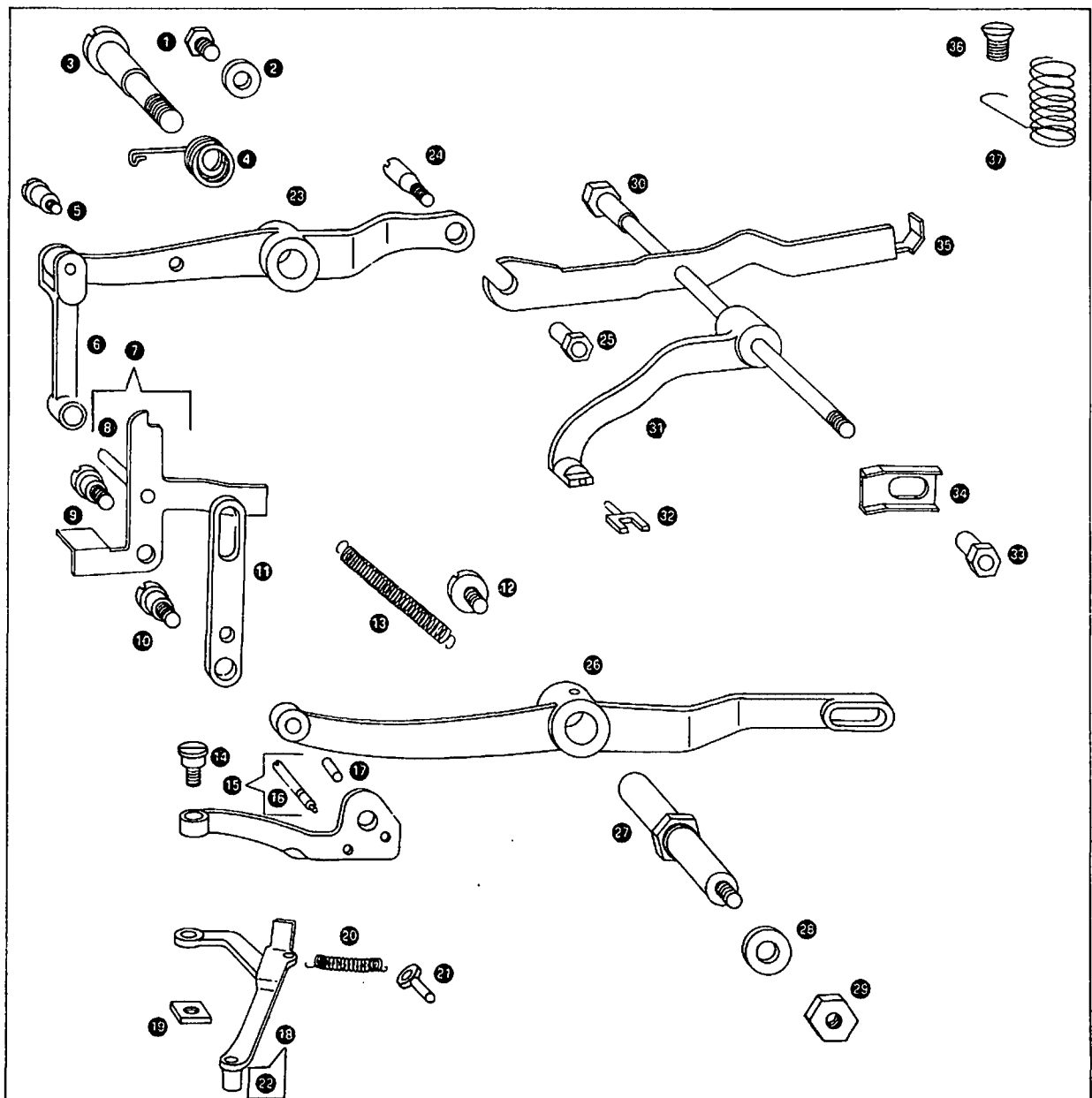
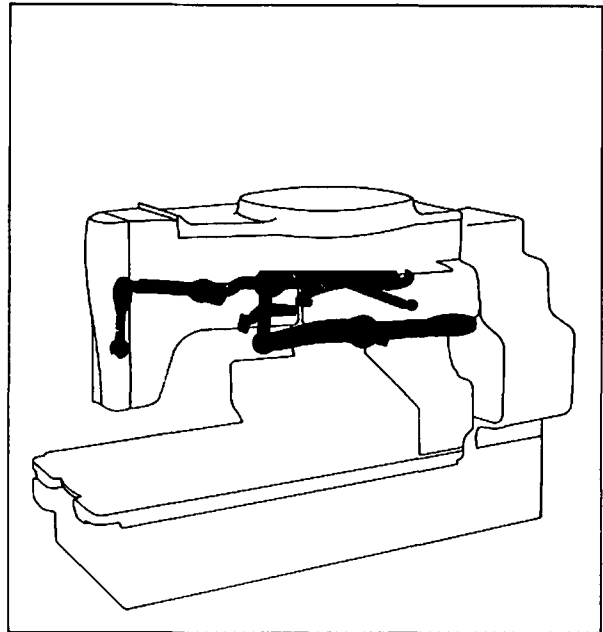
Parts List for 271K12 Machine

Ref. No.	Part No. For Ordering	Description	Amt. Req.
1	271670	Thread (lower) Cutting Lever	
2	201(803)	Thread (upper) Cutting Blade Driving Arm Latch Tripping Plate Screw	
3	271681	Thread (upper) Cutting Blade Driving Arm Latch Tripping Plate	
4	1351(803)	Thread (lower) Cutting Lever Ball Screw	
5	1520(809)	Thread (lower) Cutting Lever Ball Screw Nut	
6	271671	Thread (lower) Cutting Lever Extension	
7	271657	Tension (side of arm) Releaser Lever Shaft	
8	350365(803)	Thread (lower) Cutting Lever Extension Screw	
9	140321(830)	Tension (side of arm) Releaser Lever Set Screw	
10	1241(804)	Tension (side of arm) Releaser Lever Spring Screw Stud	
11	271656	Tension (side of arm) Releaser Lever with 140321(830)	
12	717(833)	Tension (side of arm) Releaser Lever Stop Screw	
13	1520(809)	Tension (side of arm) Releaser Lever Stop Screw Nut	
14	271655	Tension (side of arm) Releaser Lever Pin (spiral)	
15	271949	Tension (side of arm) Releaser Lever Spring	
16	40052	Tension (side of arm) Releaser Lever Lock Pin	
17	40053	Tension (side of arm) Releaser Lever Lock Pin Spring	
18	1352(803)	Tension (side of arm) Releaser Lever Lock Pin Screw Bushing	
19	157(806)	Clamp Lifting Arm Connection Roller and Screw Stud Bracket Screw	
20	39541	Clamp Lifting Arm Connection Roller and Screw Stud Bracket Screw Washer	
21	229(804)	Clamp Lifting Arm Connection Roller Cap Screw	
22	12424	Clamp Lifting Arm Connection Roller Cap Screw Washer	
23	271540	Clamp Lifting Arm Connection	
24	1620(805)	Clamp Lifting Arm Connection Hinge Screw Nut	
25	141556(830)	Clamp Lifting Arm Connection Hinge Screw	
26	1901	Clamp Lifting Arm Connection Roller and Screw Stud with 229(804) and 12424	
27	271541	Clamp Lifting Arm Connection Roller and Screw Stud Bracket	
28	271628	Sewing Safety Lock Engaging Plate	
29	114123(804)	Sewing Safety Lock Engaging Plate Screw	
30	271622	Safety Tripping Lever Lock	
31	350114(803)	Safety Tripping Lever Lock Screw	2
32	39541	Safety Tripping Lever Lock Screw Washer	2
33	140566(830)	Safety Tripping Lever Lock Plate Hinge Screw	
34	271623	Safety Tripping Lever Lock Plate	
35	271621	Safety Tripping Lever	
36	350109(803)	Safety Tripping Lever Hinge Screw	
37	251170	Safety Tripping Lever Spring	
38	7071	Safety Tripping Lever Spring Screw Washer	
39	217(804)	Safety Tripping Lever Spring Screw	
40	271624	Safety Tripping Lever Release Plate	
41	898(804)	Safety Tripping Lever Release Plate Screw	
42	201381(804)	Sewing Safety Lock Hinge Bracket Spring Screw	
43	2256	Sewing Safety Lock Hinge Bracket Spring	
44	271625	Sewing Safety Lock	
45	792(804)	Sewing Safety Lock Screw	
46	271629	Sewing Safety Lock Hinge Bracket	
47	271630	Sewing Safety Lock Hinge Bracket Collar with 202(806)	
48	202(806)	Sewing Safety Lock Hinge Bracket Collar Screw	
49	268072	Tension (side of arm) Releaser Lever Shaft Collar with two 200386(803)	
50	200386(803)	Tension (side of arm) Releaser Lever Shaft Collar Set Screw	2



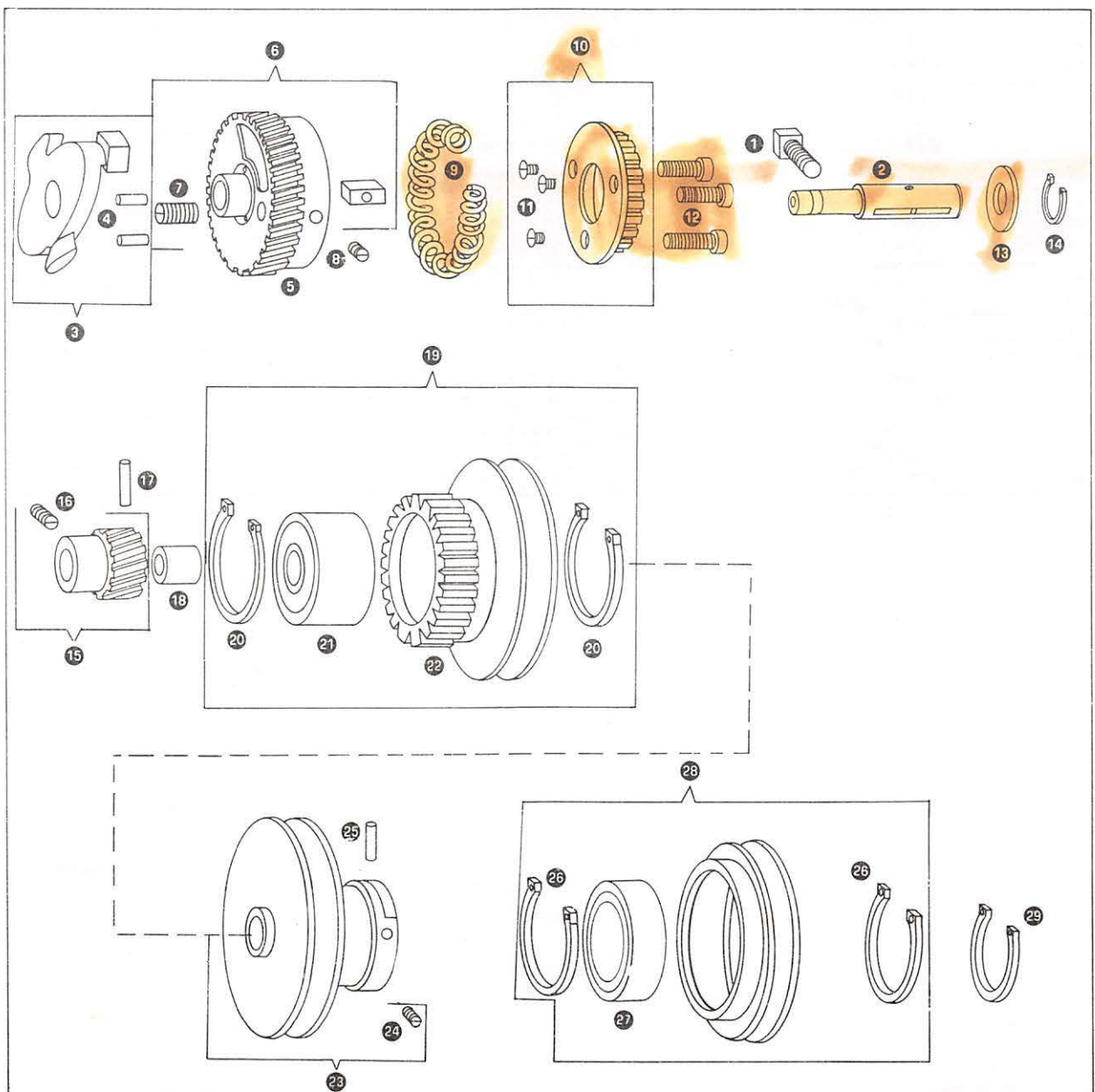
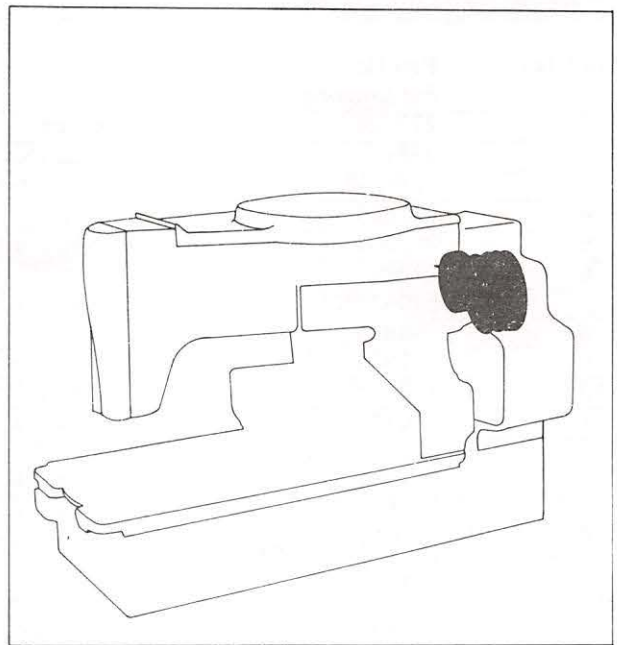
Parts List for 271K12 Machine

Ref. No.	Part No. For Ordering	Description	Amt. Req.
1	141316(830)	Knife Bar Driving Lever Spring Screw	
2	271967	Automatic Knife Disengaging Lever Stop Washer	
3	141649(803)	Knife Bar Driving Lever Hinge Screw	
4	23681	Knife Bar Driving Lever Spring	
5	1240(806)	Knife Bar Connecting Link Hinge Screw	
6	271914	Knife Bar Connecting Link	
7	262128	Knife Bar Disengaging Lever with 262058	
8	262058	Knife Bar Disengaging Lever Screw Stud	
9	90(806)	Knife Bar Disengaging Lever Hinge Screw	
10	54(806)	Knife Bar Driving Lever (intermediate) Connecting Link Hinge Screw	
11	262171	Knife Bar Driving Lever (intermediate) Connecting Link	
12	144(804)	Knife Bar Driving Lever (intermediate) Cap Screw	
13	249660	Knife Bar Disengaging Lever Spring	
14	50416(806)	Knife Bar Disengaging Lever Catch Hinge Screw	
15	271935	Knife Bar Disengaging Lever Catch Bracket with 1242(804) and 238089	
16	1242(804)	Knife Bar Disengaging Lever Spring Screw	
17	238089	Knife Bar Disengaging Lever Catch Bracket Position Pin	
18	271934	Knife Bar Disengaging Lever Catch with 1963	
19	1547(819)	Knife Bar Disengaging Lever Catch Hinge Screw Nut	
20	249659	Knife Bar Disengaging Lever Catch Spring	
21	1241(804)	Knife Bar Disengaging Lever Catch Spring Screw Stud	
22	1963	Knife Bar Disengaging Lever Catch Roller and Stud	
23	271595	Knife Bar Driving Lever	
24	271801	Knife Bar Driving Lever Screw Stud	
25	201732(803)	Knife Bar Driving Lever Screw Stud Nut	
26	271936	Knife Bar Driving Lever (intermediate)	
27	141586(803)	Knife Bar Driving Lever (intermediate) Hinge Screw Stud	
28	205634	Knife Bar Driving Lever (intermediate) Hinge Screw Stud Washer	
29	53570(819)	Knife Bar Driving Lever (intermediate) Hinge Screw Stud Nut	
30	350712(803)	Barring Lever Hinge Screw	
31	271838	Barring Lever	
32	271412	Barring Slide Operating Rod Stud	
33	201732(803)	Barring Lever Hinge Screw Nut	
34	271429	Feed Hand Ratchet Stop	
35	271952	Starting Lever Safety	
36	190(804)	Arm Oil Wick Support Spring Screw	
37	271504	Arm Oil Wick Support Spring	



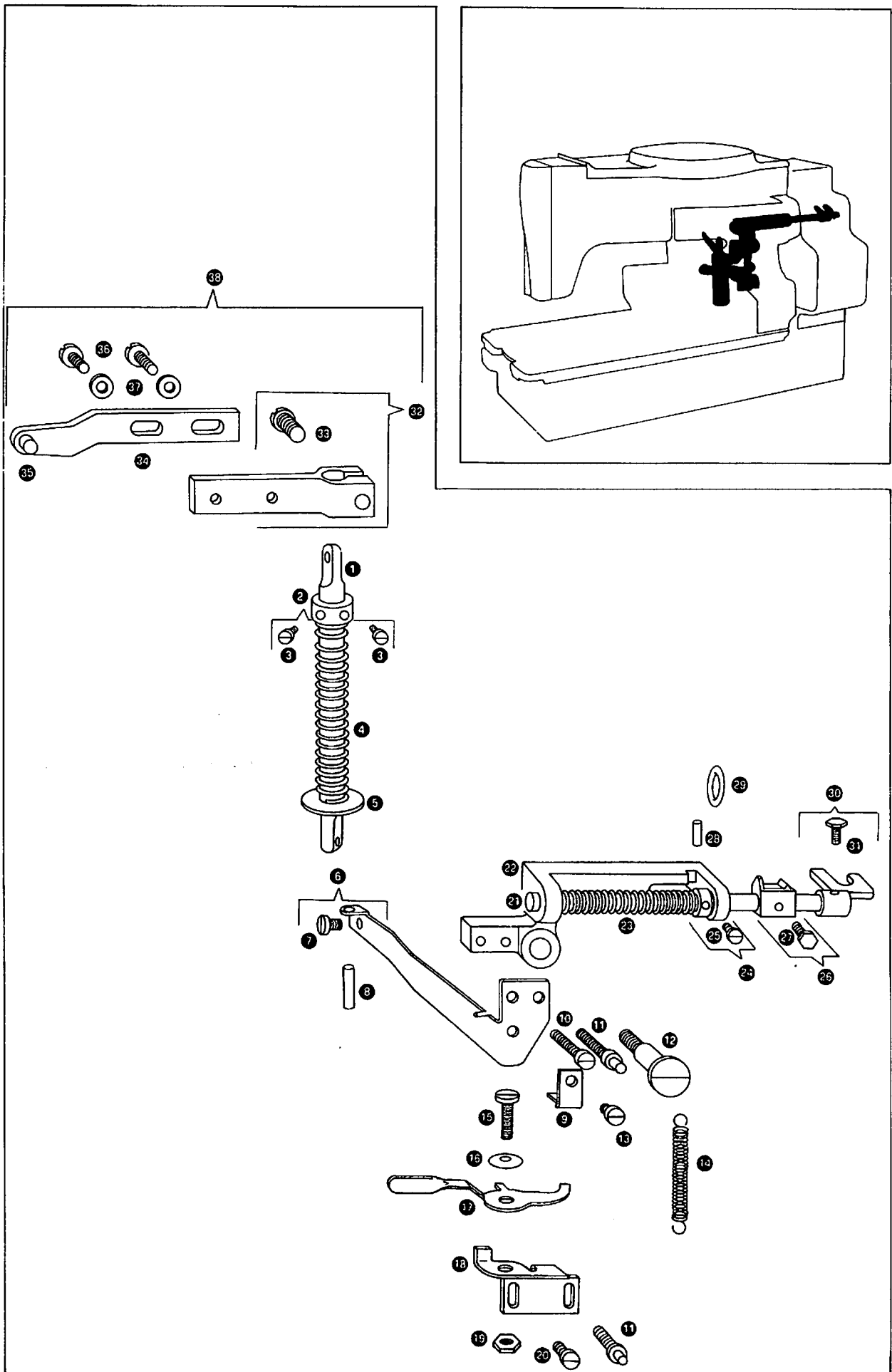
Parts List for 271K12 Machine

Ref. No.	Part No. For Ordering	Description	Amt. Req.
1	795(803)	Stop Cam Gear Stud Set Screw	
2	271650	Stop Cam Gear Stud	
3	271939	Stop Cam with two 202330	
4	202330	Stop Cam Oil Packing (wick)	2
5	271759	Stop Cam Gear	
6	249713	Stop Cam Spring Stop Screw Block with 457(830)	
7	457(830)	Stop Cam Spring Stop Screw Block Set Screw	
8	871(806)	Stop Cam Spring Stop Screw	
9	271495	Stop Cam Spring	
10	271619	Pulley (positive drive) Gear and Stop Cam Spring Cover with three 389(806)	
11	389(806)	Stop Cam Spring Cover Screw	3
12	140050(803)	Pulley (positive drive) Gear Screw	3
13	271730	Stop Cam Gear Stud Washer	
14	265672	Stop Cam Gear Stud Retaining Ring	
15	271653	Stop Cam Pinion with 453(830)	
16	453(830)	Stop Cam Pinion Set Screw	
17	40025	Stop Cam Pinion Position Pin	
18	271738	Pulley (positive drive) Spacer	
19	271763	Pulley (positive drive) with 271736 and two 271766	
20	271766	Pulley (positive drive) Ball Bearing Retaining Ring	2
21	271736	Pulley (positive drive) Ball Bearing	
22	271618	Pulley (positive drive)	
23	271617	Pulley (tight) with 140321(803)	
24	140321(803)	Pulley (tight) Set Screw	
25	271739	Pulley (tight) Pin (spirol)	
26	271767	Pulley (loose) Ball Bearing Retaining Ring	2
27	271734	Pulley (loose) Ball Bearing	
28	271615	Pulley (loose) with 271734 and two 271767	
29	271740	Pulley (loose) Retaining Ring	



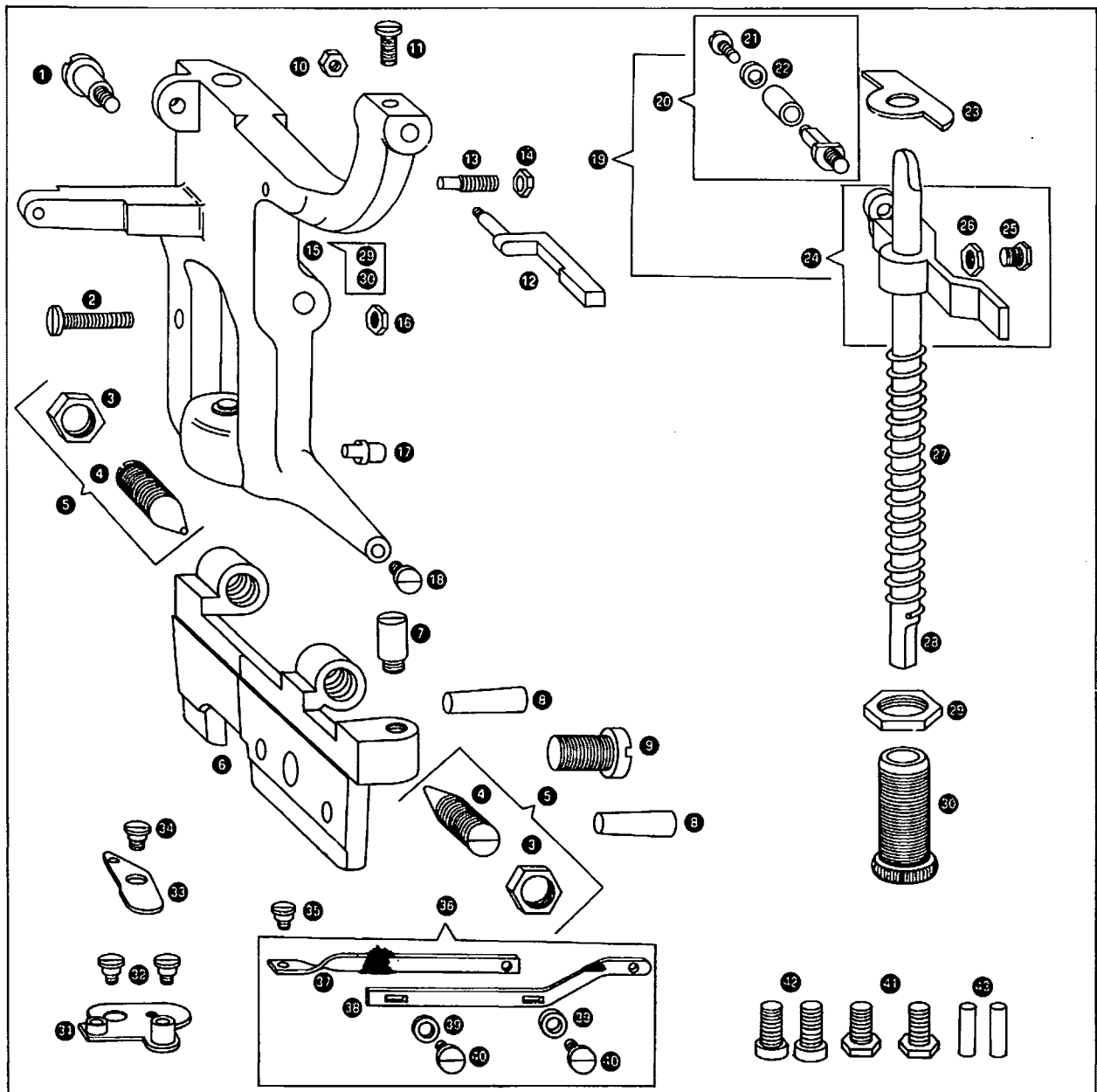
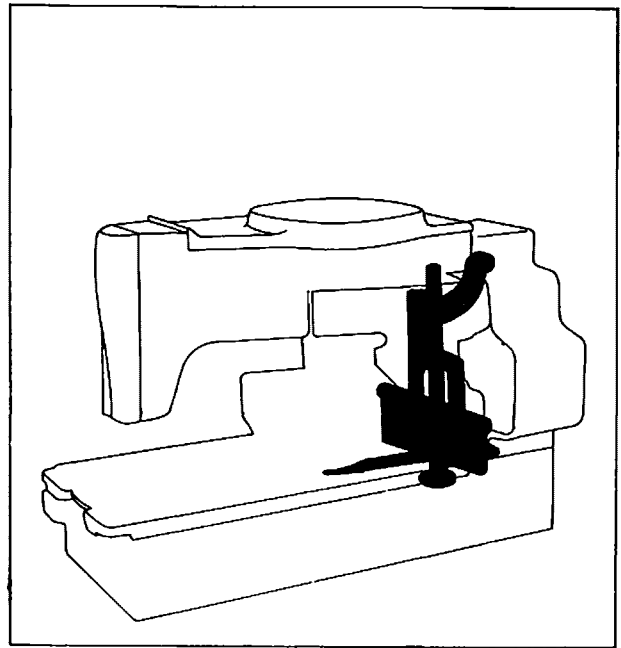
Parts List for 271K12 Machine

Ref. No.	Part No. For Ordering	Description	Amt. Req.
1	271729	Starting Lever Rod	
2	39675	Starting Lever Spring Collar with two 191(806)	
3	191(806)	Starting Lever Spring Collar Set Screw	2
4	222616	Starting Lever Spring	
5	202005	Starting Lever Spring Washer	
6	249858	Belt Shifter Shaft Bracket Extension with 51047(805)	
7	51047(805)	Belt Shifter Shaft Bracket Extension Pinch Screw	
8	249864	Belt Shifter Trip Stud	
9	271965	Belt Shifter Shaft Bracket Stop	
10	158(805)	Belt Shifter Shaft Bracket Extension Screw	
11	350339(805)	Belt Shifter Shaft Bracket Spring Screw Stud	2
12	350288(806)	Belt Shifter Shaft Bracket Hinge Screw	
13	191(806)	Belt Shifter Shaft Bracket Stop Screw	
14	23554	Belt Shifter Shaft Bracket Spring	
15	59(804)	Speed Adjusting Lever Hinge Screw	
16	202248	Speed Adjusting Lever Hinge Screw Washer	
17	271802	Speed Adjusting Lever (slow speed)	
18	271803	Speed Adjusting Lever Bracket	
19	1521(819)	Speed Adjusting Lever Hinge Screw Nut	
20	161(804)	Speed Adjusting Lever Bracket Screw	
21	271524	Belt Shifter Shaft	
22	271727	Belt Shifter Shaft Bracket	
23	271950	Belt Shifter Shaft Spring	
24	249861	Belt Shifter Shaft Guide Collar with 237(804)	
25	237(804)	Belt Shifter Shaft Guide Collar Set Screw	
26	271523	Belt Shifter Operating Block with 350287(806)	
27	350287(806)	Belt Shifter Operating Block Set Screw	
28	2269	Belt Shifter Shaft Guide Collar Position Pin	
29	39882	Belt Shifter Stop Washer (nylon)	
30	271977	Belt Shifter with 350287(806)	
31	350287(806)	Belt Shifter Set Screw	
32	271989	Sewing Safety Lever Clamp with 1149(830)	
33	1149(830)	Sewing Safety Lever Clamp Pinch Screw	
34	271990	Sewing Safety Lever Extension with 1822	
35	1822	Sewing Safety Lever Extension Roller	
36	191(806)	Sewing Safety Lever Extension Screw	2
37	204925	Sewing Safety Lever Extension Screw Washer	2
38	271991	Sewing Safety Lever complete	



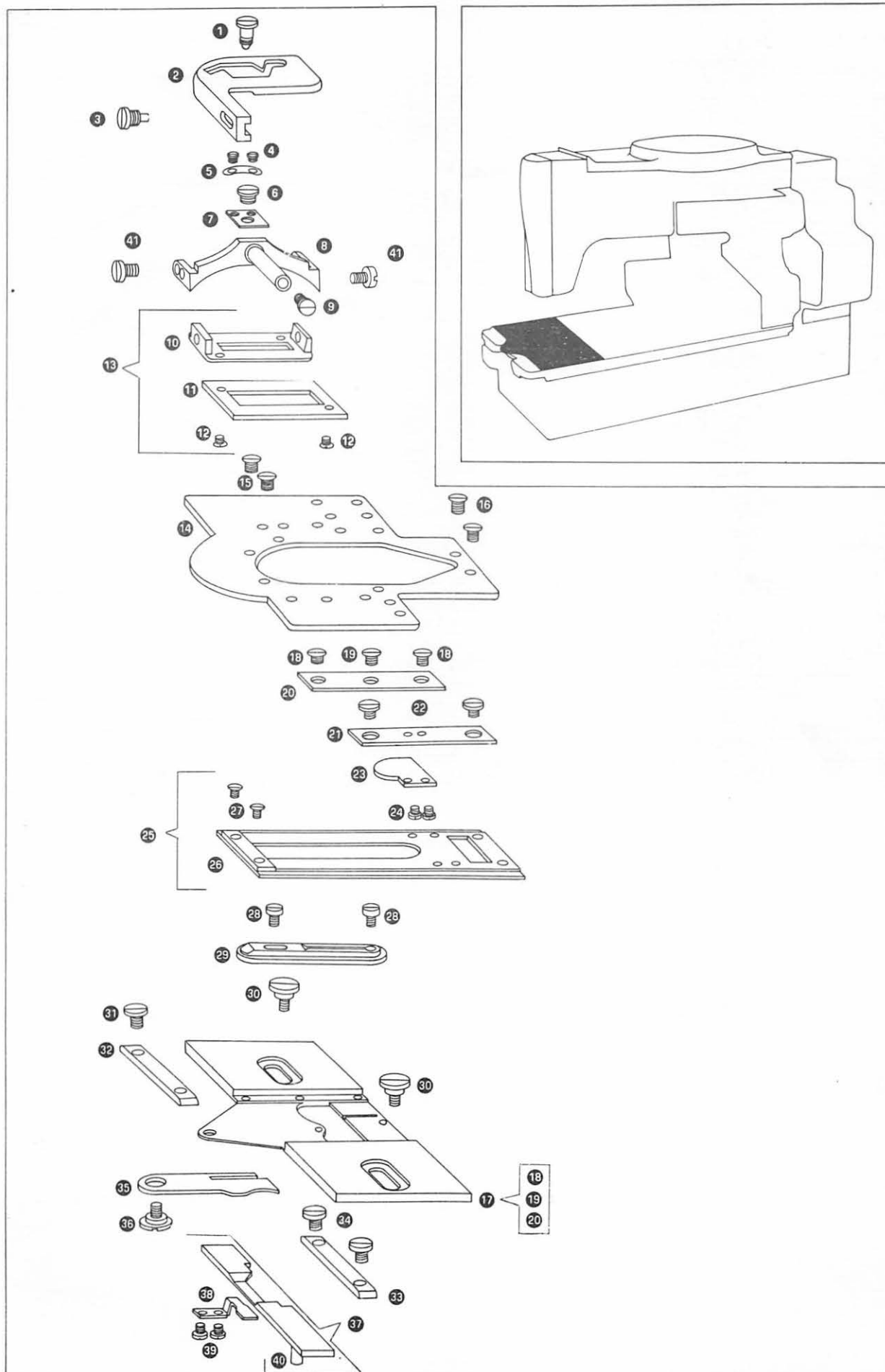
Parts List for 271K12 Machine

Ref. No.	Part No. For Ordering	Description	Amt. Req.
1	61(806)	Starting Lever Rod Hinge Screw	
2	124(803)	Starting Lever Stop Screw	
3	1508(813)	Starting Lever Screw Centre Nut	
4	564(803)	Starting Lever Screw Centre	
5	58384	Starting Lever Screw Centre with 1508(813)	
6	271937	Starting Lever Bracket	
7	1469(803)	Tension (side of arm) Releaser Lever Stop Screw Stud	
8	8582	Starting Lever Bracket Dowel Pin	2
9	123(805)	Starting Lever Bracket Screw	
10	1655(803)	Belt Shifter Operating Actuator Lock Nut	
11	350287(806)	Belt Shifter Operating Actuator Set Screw	
12	271522	Belt Shifter Operating Actuator	
13	717(833)	Starting Lever Adjusting Screw	
14	1520(809)	Starting Lever Adjusting Screw Nut	
15	271992	Starting Lever with 913(806) and 1638(804)	
16	1518(809)	Starting Lever Stop Screw Nut	
17	1241(804)	Tension (side of arm) Releaser Lever Spring Screw Stud	
18	350235(804)	Sewing Safety Lock Pitman Hinge Screw (back)	
19	271968	Stop Cam Interlocking Rod Guide with 1959	
20	1959	Knife Bar Driving Lever (intermediate) Roller and Screw Stud with 229(804) and 12424	
21	229(804)	Knife Bar Driving Lever (intermediate) Roller Cap Screw	
22	12424	Knife Bar Driving Lever (intermediate) Roller Cap Screw Washer	
23	39988	Stop Cam Interlocking Rod Guide Washer (nylon)	
24	271940	Stop Cam Interlocking Rod Guide with 1619(850) and 350635(830)	
25	350635(850)	Stop Cam Interlocking Rod Guide Set Screw	
26	1619(819)	Stop Cam Interlocking Rod Guide Set Screw Lock Nut	
27	21651	Stop Cam Interlocking Rod Spring	
28	249741	Stop Cam Interlocking Rod	
29	1638(804)	Stop Cam Interlocking Rod Spring Regulating Thumb Screw Nut	
30	913(806)	Stop Cam Interlocking Rod Spring Regulating Thumb Screw	
31	271627	Sewing Safety Lock Actuating Cam Plate	
32	181(804)	Sewing Safety Lock Actuating Cam Plate Screw	2
33	271626	Sewing Safety Lock Actuating Cam	
34	980(803)	Sewing Safety Lock Actuating Cam Hinge Screw	
35	980(803)	Sewing Safety Lock Pitman Hinge Screw (front)	
36	271633	Sewing Safety Lock Pitman complete Nos. 249947, 271632, two each 914(806) and 39541	
37	271632	Sewing Safety Lock Pitman (rear section)	
38	249947	Sewing Safety Lock Pitman (front section)	
39	39541	Sewing Safety Lock Pitman Screw Washer	
40	914(806)	Sewing Safety Lock Pitman Screw	
41	868(805)	Arm Screw (front)	2
42	748(805)	Arm Screw (back)	2
43	8582	Arm Dowel Pin	2



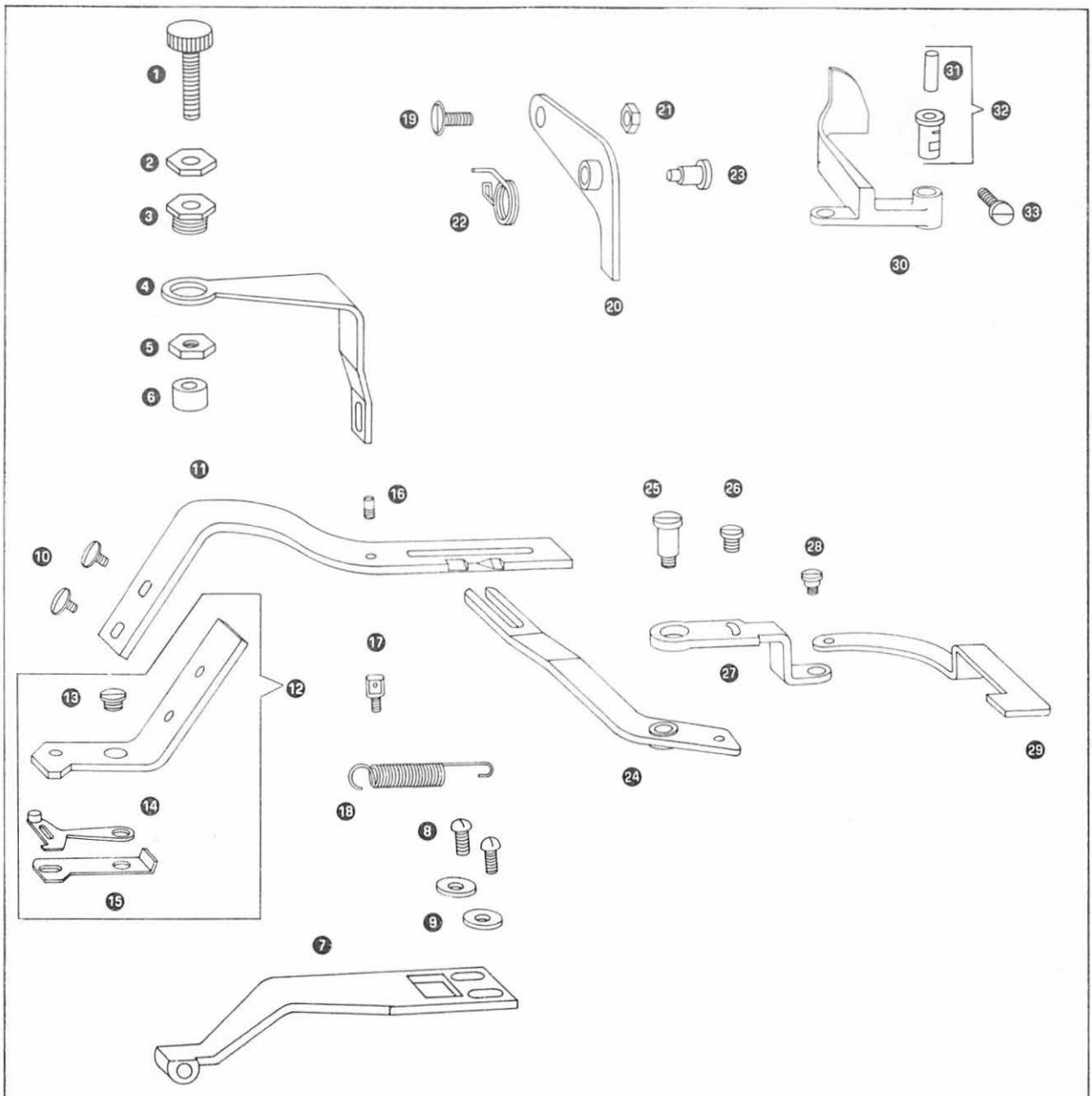
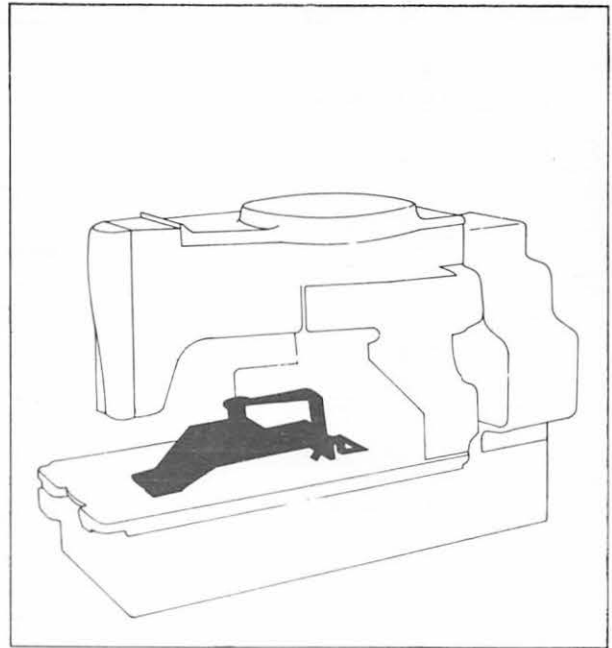
Parts List for 271K12 Machine

Ref. No.	Part No. For Ordering	Description	Amt. Req.
1	141626(850)	Thread (upper) Cutting Blade Guide Plate Follower Screw	
2	272000	Thread (upper) Cutting Blade Guide Plate	
3	51064(803)	Thread (upper) Cutting Blade Guide Plate Screw	
4	337(805)	Clamp Check Holder Adjusting Screw	2
5	249749	Clamp Check Holder Adjusting Screw Friction Plate	
6	237(804)	Clamp Check Holder Stop Screw	
7	39715	Clamp Check Holder Stop Screw Washer	
8	271849	Clamp Check Holder	
9	212(804)	Clamp Check Holder Hinge Cap Screw	
10	271403	Clamp Check	
11	271402	Clamp Check Mat Housing with 1/16 inch Rubber Mat	
12	141601(809)	Clamp Check Mat Housing Screw	2
13	271404	Clamp Check complete Nos. 271402, 271403 and two 141601(819)	
14	249753	Clamp Carrier Plate	
15	404(804)	Clamp Carrier Plate Screw (front)	2
16	1231(806)	Clamp Carrier Plate Screw (back)	2
17	271921	Clamp Carrier Slide with 1345(804), 271920 and two 756(804)	
18	756(804)	Clamp Carrier Guide (left) Screw (long)	2
19	1345(804)	Clamp Carrier Guide (left) Screw (short)	
20	271920	Clamp Carrier Guide (left)	
21	271922	Clamp Carrier Guide (right)	
22	1230(806)	Clamp Carrier Guide (right) Screw	2
23	271805	Thread (lower) Cutting Blade Friction Plate	
24	228(806)	Thread (lower) Cutting Blade Friction Plate Screw	2
25	23116	Clamp Carrier with 249735 and two 934(819)	
26	249735	Clamp Carrier Stay Plate	
27	934(819)	Clamp Carrier Stay Plate Screw	2
28	350234(804)	Needle Plate Screw	2
29	271947	Needle Plate	
30	1256(804)	Clamp Carrier Slide Screw	2
31	1094(803)	Clamp Carrier Slide Guide (left) Screw	2
32	271893	Clamp Carrier Slide Guide (left)	
33	271894	Clamp Carrier Slide Guide (right)	
34	1094(803)	Clamp Carrier Slide Guide (right) Screw	2
35	271749	Thread (lower) Pull-off	
36	141557(803)	Thread (lower) Pull-off Hinge Screw	
37	271780	Thread (lower) Cutting Blade Carrier with 40038	
38	271926	Thread (lower) Cutting Blade	
39	240(804)	Thread (lower) Cutting Blade Screw	2
40	40038	Thread (lower) Cutting Blade Carrier Stud	
41	1296(830)	Clamp Check Screw	2



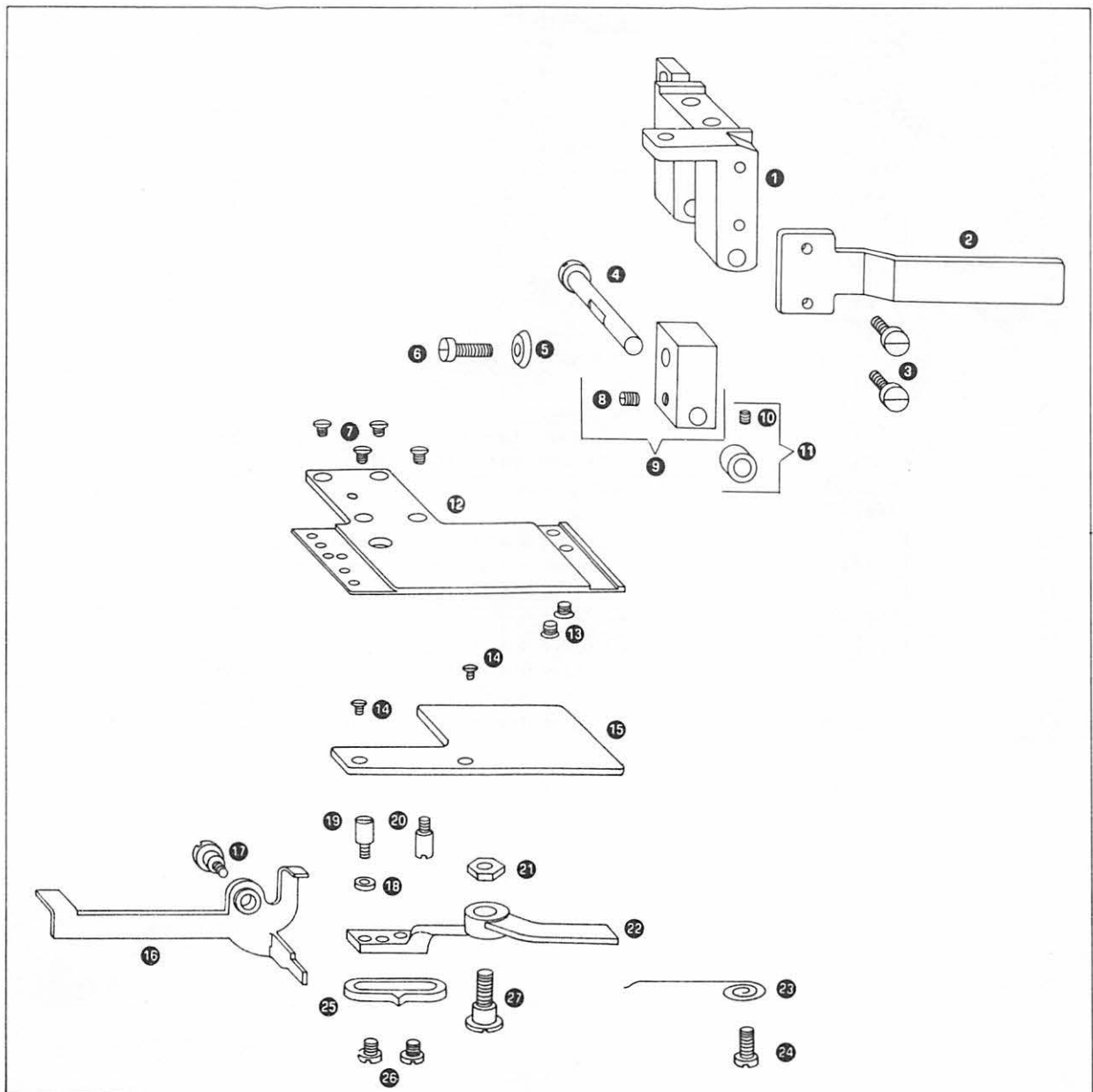
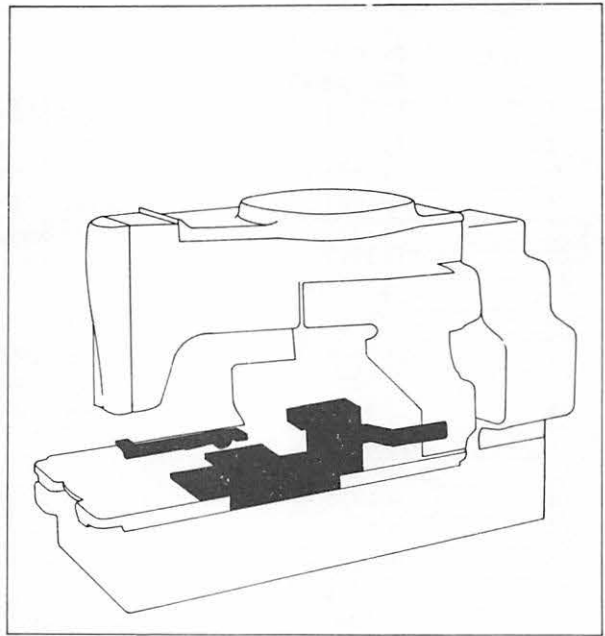
Parts List for 271K12 Machine

Ref. No.	Part No. For Ordering	Description	Amt. Req.
1	50221(804)	Clamp Spring Thumb Screw (pressure regulating)	
2	1521(805)	Clamp Spring Thumb Screw Lock Nut	
3	271702	Clamp Spring Thumb Screw Sleeve	
4	271450	Clamp Spring	
5	1623(819)	Clamp Spring Thumb Screw Sleeve Nut	
6	271546	Clamp Spring Thumb Screw Rest	
7	271845	Clamp Arm with 50166(805)	
8	141554(830)	Clamp Arm Screw	2
9	202622	Clamp Arm Screw Washer	2
10	1423(806)	Thread (upper) Cutting Blade Arm Screw	2
11	23327	Thread (upper) Cutting Blade Driving Arm with 141624(803)	
12	271995	Thread (upper) Cutting Blade Arm with 934(819), 271993 and 271994	
13	934(819)	Thread (upper) Cutting Blade Screw	
14	271994	Thread (upper) Cutting Blade	
15	271993	Thread (upper) Cutting Blade (stationary)	
16	141624(803)	Thread (upper) Cutting Blade Driving Arm Screw	
17	50166(805)	Thread (upper) Cutting Blade Driving Arm Actuating Lever Spring Screw Eye	
18	271998	Thread (upper) Cutting Blade Driving Arm Actuating Lever Spring	
19	141285	Thread (upper) Cutting Blade Driving Arm Latch Screw	
20	271425	Thread (upper) Cutting Blade Connecting End Latch	
21	1698	Thread (upper) Cutting Blade Driving Arm Latch Screw Nut	
22	271499	Thread (upper) Cutting Blade Driving Arm Latch Spring	
23	140071	Thread (upper) Cutting Blade Driving Arm Latch Hinge Screw	
24	271997	Thread (upper) Cutting Blade Driving Arm Actuating Lever	
25	141558(833)	Thread (upper) Cutting Lever Hinge Screw	
26	350459(804)	Thread (upper) Cutting Lever Connection Screw	
27	271689	Thread (upper) Cutting Lever Connection (adjustable)	
28	350265(803)	Thread (upper) Cutting Cam Follower Link Screw	
29	271453	Thread (upper) Cutting Cam Follower Link	
30	271452	Thread (upper) Cutting Cam Follower	
31	263572	Thread (upper) Cutting Cam Follower Hinge Stud Oil Packing (wick)	
32	232709	Thread (upper) Cutting Cam Follower Hinge Stud with 263572	
33	160(819)	Thread (upper) Cutting Cam Follower Hinge Stud Set Screw	



Parts List for 271K12 Machine

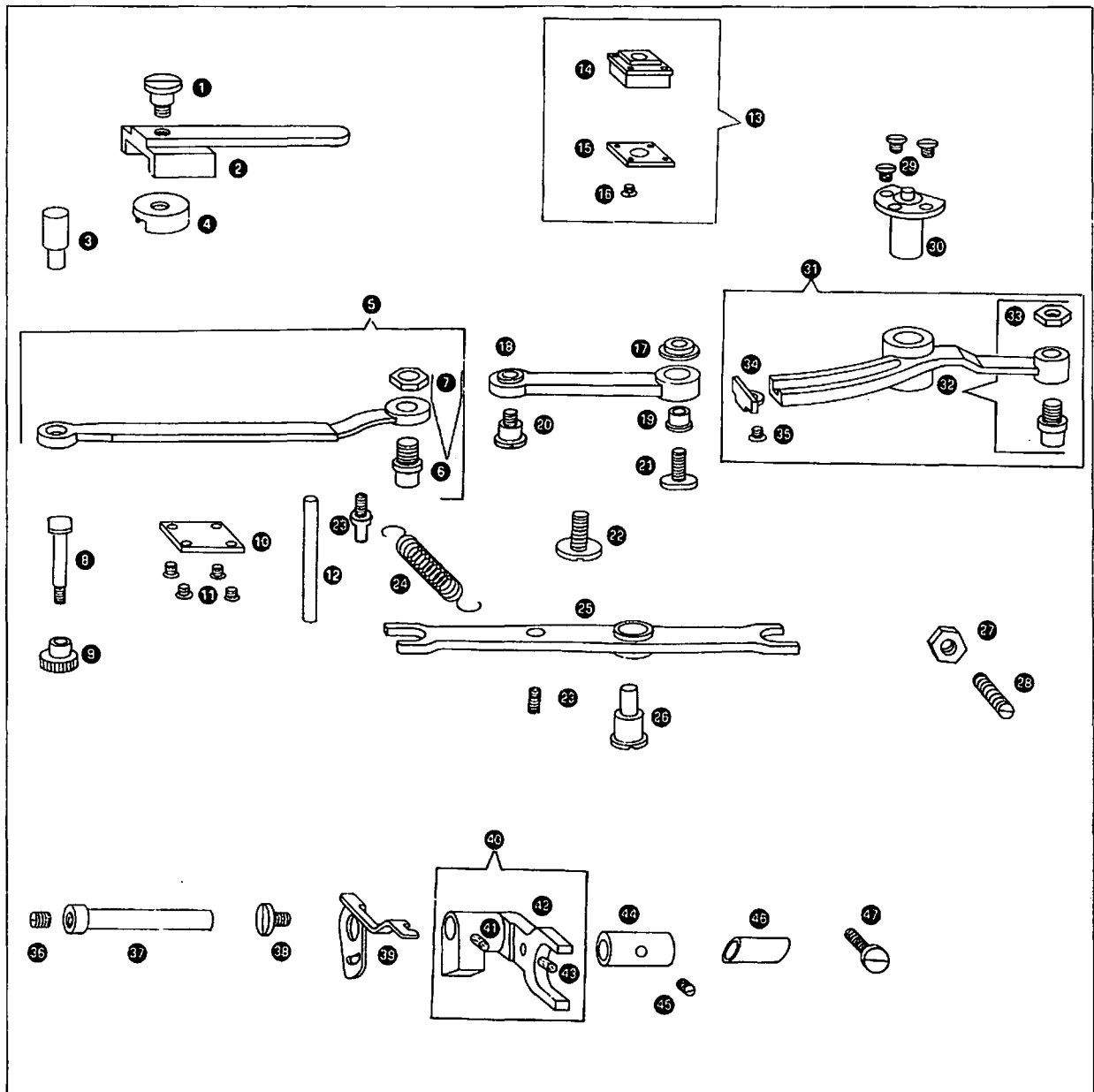
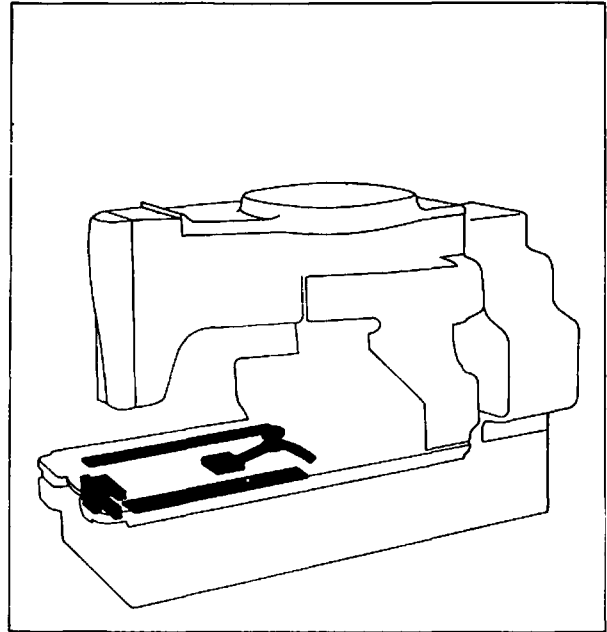
Ref. No.	Part No. For Ordering	Description	Amt. Req.
1	271846	Clamp Arm Hinge Block with 141624(803)	
2	271539	Clamp Lifting Arm	
3	690(804)	Clamp Lifting Arm Screw	2
4	271533	Clamp Arm Hinge Block Pin	
5	23390	Clamp Spring Screw Washer	
6	157(806)	Clamp Spring Screw	
7	1235(806)	Clamp Plate Screw	4
8	889(830)	Clamp Arm Hinge Block Pin Set Screw	
9	271543	Clamp Plate Block with 889(830)	
10	201052(833)	Clamp Arm Hinge Block Pin Collar Set Screw	
11	227224	Clamp Arm Hinge Block Pin Collar with 201052(833)	
12	271542	Clamp Plate	
13	397(805)	Clamp Plate Block Screw	2
14	50156(804)	Clamp Plate Support Screw	2
15	271544	Clamp Plate Support	
16	249922	Stop Lever	
17	50416(806)	Stop Lever Hinge Screw	
18	250444	Feed Wheel Tripping Lever Screw Stud Washer	
19	646(806)	Feed Wheel Tripping Lever Screw Stud	
20	184(805)	Feed Wheel Tripping Lever Stop Screw	
21	1620(805)	Feed Wheel Tripping Lever Hinge Screw Nut	
22	271933	Feed Wheel Tripping Lever	
23	23435	Feed Wheel Tripping Lever Spring	
24	190(804)	Feed Wheel Tripping Lever Spring Screw	
25	271951	Feed Wheel Tripping Lever Point	
26	203(803)	Feed Wheel Tripping Lever Point Screw	2
27	350237(803)	Feed Wheel Tripping Lever Hinge Screw	



Parts List for 271K12 Machine

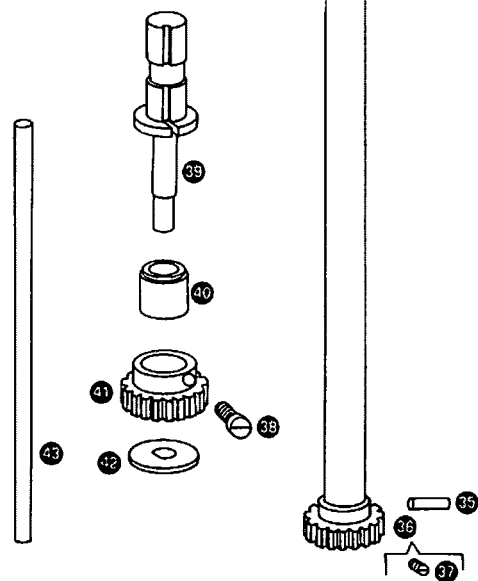
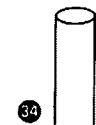
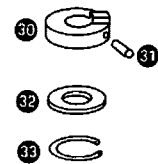
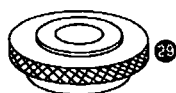
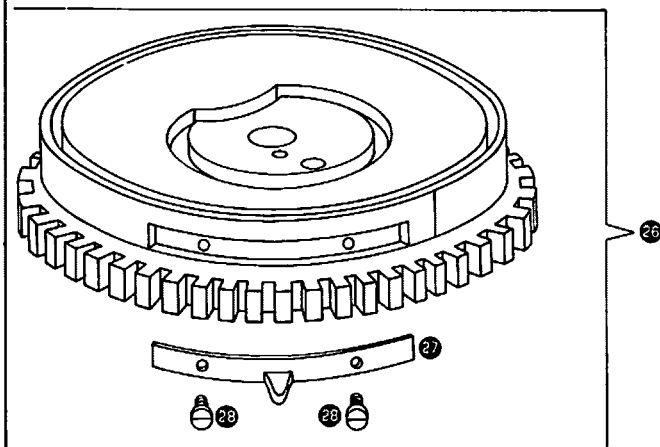
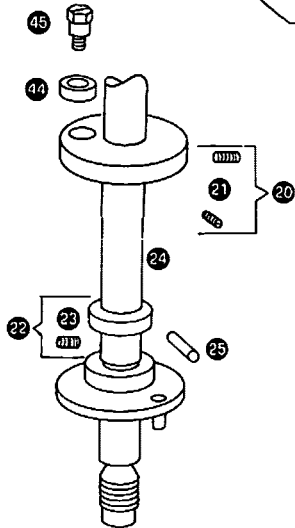
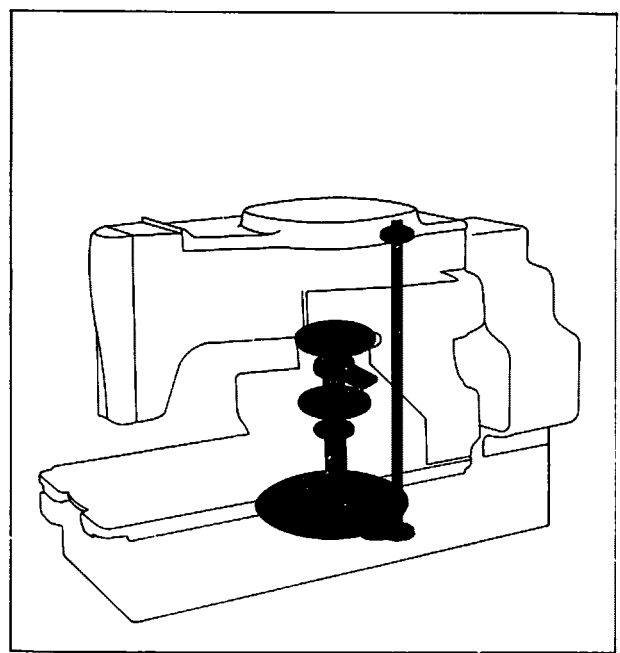
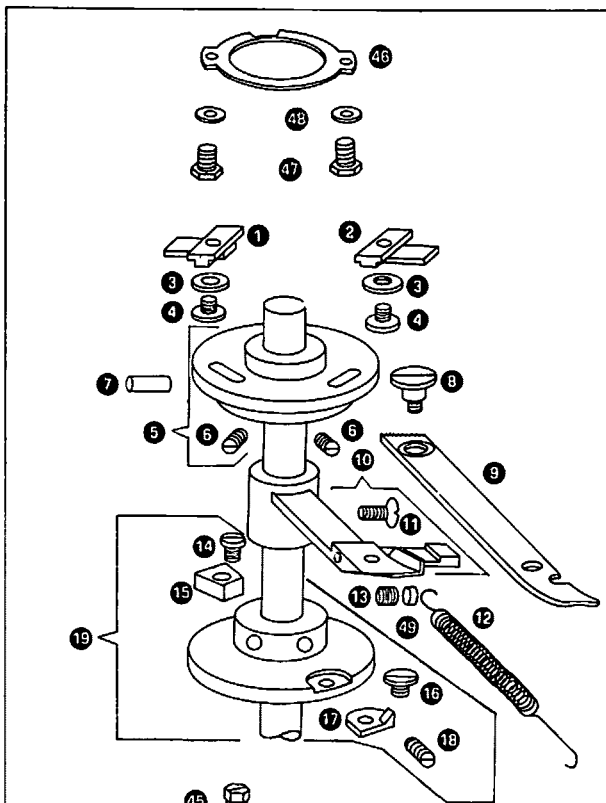
Ref. No.	Part No. For Ordering	Description	Amt. Req.
1	67(804)	Clamp Carrier Slide Lever Regulator Screw	
2	271895	Clamp Carrier Slide Lever Regulator	
3	271896	Clamp Carrier Slide Regulating Stud Bushing	
4	271891	Clamp Carrier Slide Lever Socket Joint	
5	99777	Clamp Carrier Slide Lever with 113314	
6	113314	Clamp Carrier Slide Lever Screw Stud with 1520(809)	
7	1520(809)	Clamp Carrier Slide Lever Roller and Screw Stud Nut	
8	1234(803)	Clamp Carrier Slide Regulating Stud	
9	1658(803)	Clamp Carrier Slide Regulating Stud Thumb Nut	
10	23396	Clamp Carrier Slide Lever Regulator Cap	
11	223(804)	Clamp Carrier Slide Lever Regulator Cap Screw	4
12	271799	Oil Supply Tube	
13	106152	Clamp Carrier Block with 40007, and four 404(804)	
14	106151	Clamp Carrier Block	
15	40007	Clamp Carrier Block Plate	
16	404(804)	Clamp Carrier Block Plate Screw	4
17	1671(803)	Clamp Carrier Regulator Stud Nut	
18	271892	Clamp Carrier Connecting Rod	
19	39532	Clamp Carrier Regulator Stud Sleeve	
20	52(803)	Clamp Carrier Connecting Rod Hinge Screw	
21	141597(803)	Clamp Carrier Regulator Stud	
22	141675(803)	Clamp Carrier Regulator Cap Screw	
23	1241(804)	Thread (lower) Cutting Blade Carrier Lever Spring Screw Stud	2
24	249534	Thread (lower) Cutting Blade Carrier Lever Spring	
25	271800	Thread (lower) Cutting Blade Carrier Lever	
26	32(806)	Thread (lower) Cutting Blade Carrier Lever Hinge Screw	
27	1520(809)	Thread (lower) Cutting Blade Carrier Lever Stop Screw Nut	
28	435(833)	Thread (lower) Cutting Blade Carrier Lever Stop Screw	
29	742(819)	Clamp Carrier Regulator Bearing Screw	3
30	271535	Clamp Carrier Regulator Bearing	
31	99774	Clamp Carrier Regulator with 240(804), 39583 and 113314	
32	113314	Clamp Carrier Regulator Screw Stud with 1520(809)	
33	1520(809)	Clamp Carrier Regulator Roller and Screw Stud Nut	
34	39583	Clamp Carrier Regulator Stud Stop	
35	240(804)	Clamp Carrier Regulator Stud Stop Screw	
36	271833	Bobbin Case Opener Bracket Oil Regulating Screw Stud	
37	271832	Bobbin Case Opener Bracket Hinge Stud	
38	141678(805)	Bobbin Case Stop Screw	
39	271418	Bobbin Case Stop	
40	271527	Bobbin Case Opener Bracket with 271828, 271829, 271974	
41	271974	Bobbin Case Opener Bracket Hinge Stud Oiling Felt	
42	271829	Bobbin Case Opener Bracket Oiling Felt Pin	
43	271828	Bobbin Case Opener Bracket Oiling Felt	
44	271417	Bobbin Case Opener Bracket Adjusting Collar	
45	50379	Bobbin Case Opener Bracket Adjusting Collar Set Screw	
46	271741	Bobbin Case Opener Bracket Hinge Stud Oil Drip Guide	
47	141602(803)	Bobbin Case Opener Bracket Hinge Stud Position Screw	

395944



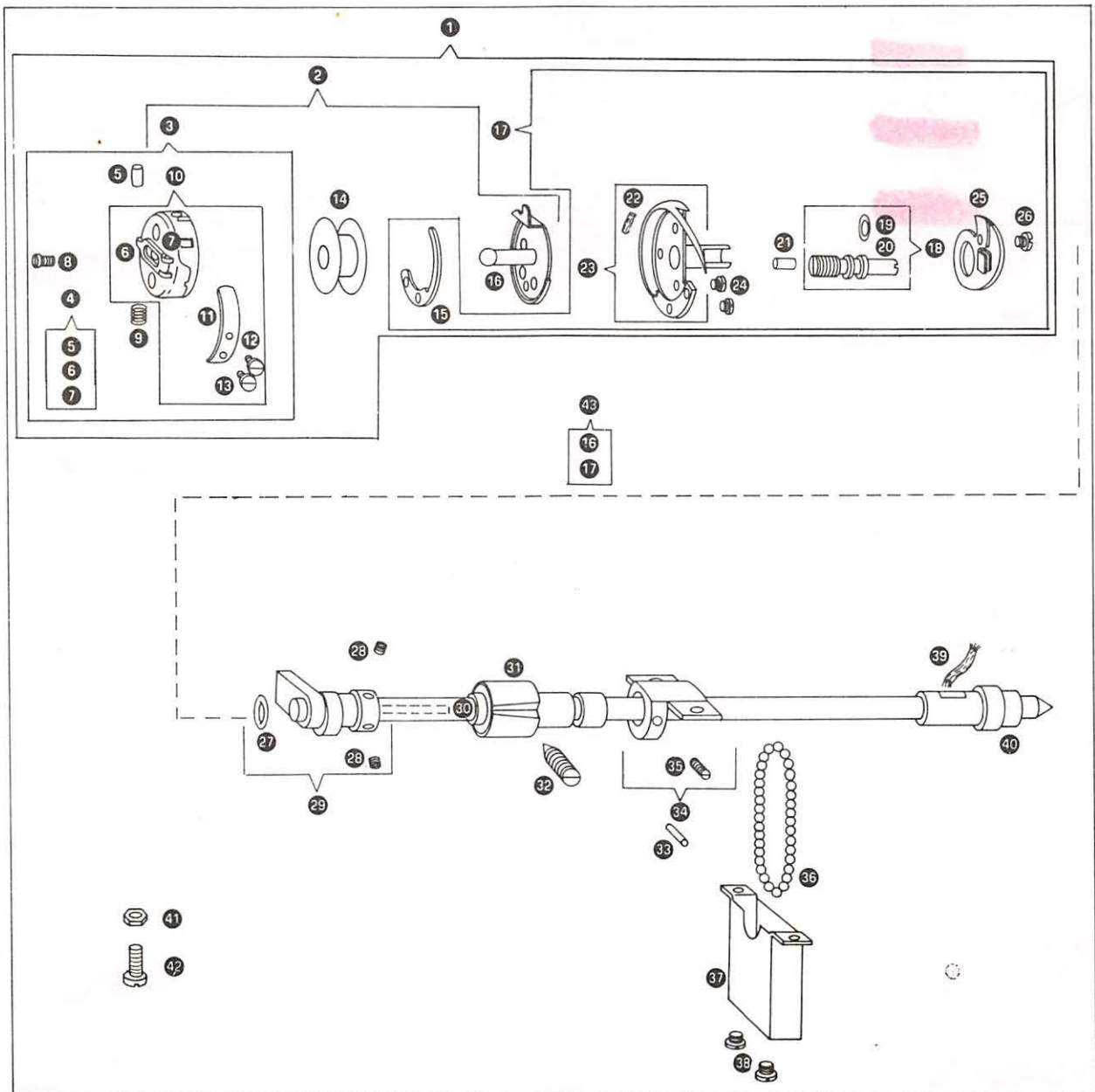
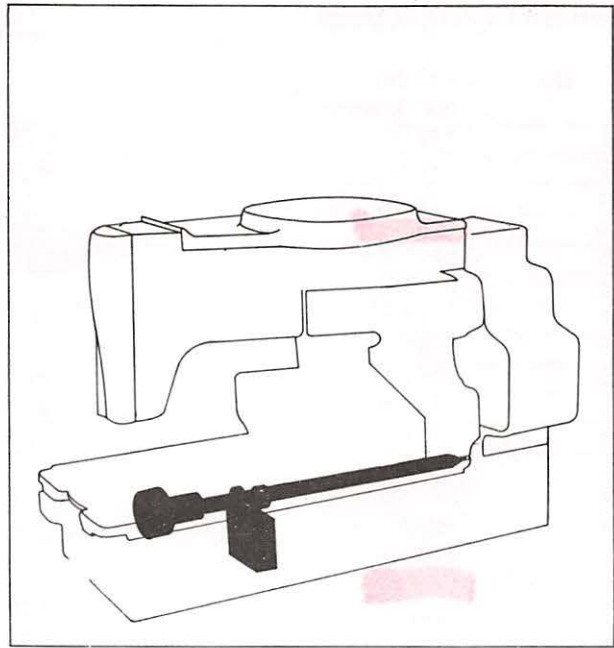
Parts List for 271K12 Machine

Ref. No.	Part No. For Ordering	Description	Amt. Req.
1	271839	Barring Plate (first bar)	
2	271840	Barring Plate (second bar)	
3	206482	Barring Plate Screw Washer	2
4	141644(803)	Barring Plate Screw	2
5	271485	Barring Plate Cam with two 448(833)	
6	448(833)	Barring Plate Cam Set Screw	2
7	40025	Barring Plate Cam Position Pin	
8	50057(804)	Feed Hand Ratchet Lever Hinge Screw	
9	271757	Feed Hand Ratchet Lever	
10	271758	Feed Hand Ratchet Lever Bracket with 1241(804)	
11	1241(804)	Feed Hand Ratchet Lever Bracket Spring Screw Stud	
12	271772	Feed Hand Ratchet Lever Bracket Spring	
13	453(830)	Feed Hand Ratchet Lever Hinge Screw Lock Screw	
14	175(805)	Knife Bar Disengaging Lever Catch Tripping Point Screw	
15	23466	Knife Bar Disengaging Lever Catch Tripping Point	
16	756(805)	Belt Shifter Trip Point Screw	
17	249863	Belt Shifter Trip Point	
18	448(833)	Knife Bar Disengaging Lever Catch Tripping Point Collar Set Screw	2
19	249869	Knife Bar Disengaging Lever Catch Tripping Point Collar with 175(805), 756(805), 23466, 249863 and two 448(833)	
20	271451	Thread (upper) Cutting Cam with 141671(803), 351894 and two 145(805)	
21	145(805)	Thread (upper) Cutting Cam Screw	2
22	271573	Feed Wheel Shaft Thrust Collar with 460(830)	
23	460(830)	Feed Wheel Shaft Thrust Collar Set Screw	
24	271927	Feed Wheel Shaft	
25	9046	Feed Wheel Shaft Thrust Collar Position Pin	
26	271564	Feed Wheel with 271795 and two 141563(805)	
27	271795	Feed Wheel Tripping Point	
28	141563(805)	Feed Wheel Tripping Point Screw	2
29	201668(805)	Feed Wheel Clamping Nut	
30	271649	Stitch Regulating Gear Driver	
31	239515	Stitch Regulating Gear Driver Pin (spirol)	
32	271569	Feed Wheel Driving Shaft Washer	
33	265672	Feed Wheel Driving Shaft Retaining Ring	
34	271565	Feed Wheel Driving Shaft	
35	239515	Feed Wheel Driving Shaft Gear Position Pin (spirol)	
36	271566	Feed Wheel Driving Shaft Gear with 904(830)	
37	904(830)	Feed Wheel Driving Shaft Gear Position Screw	
38	141602(803)	Feed Wheel Driving Shaft Gear (intermediate) Stud Set Screw	
39	22963	Feed Wheel Driving Shaft Gear (intermediate) Stud	
40	22964	Feed Wheel Driving Shaft Gear (intermediate) Bushing	
41	22963	Feed Wheel Driving Shaft Gear (intermediate)	
42	22965	Feed Wheel Driving Shaft Gear (intermediate) Bushing Washer	
43	235706	Feed Wheel Driving Shaft Oiling Wick	
44	351894	Thread (upper) Cutting Cam Roller	
45	141671(803)	Thread (upper) Cutting Cam Roller Screw Stud	
46	271880	Barring Tie Stitch Plate	
47	141644(803)	Barring Tie Stitch Plate Screw	2
48	206482	Barring Tie Stitch Plate Screw Washer	2
49	204479	Feed Hand Ratchet Lever Hinge Screw Lock Screw Insert	



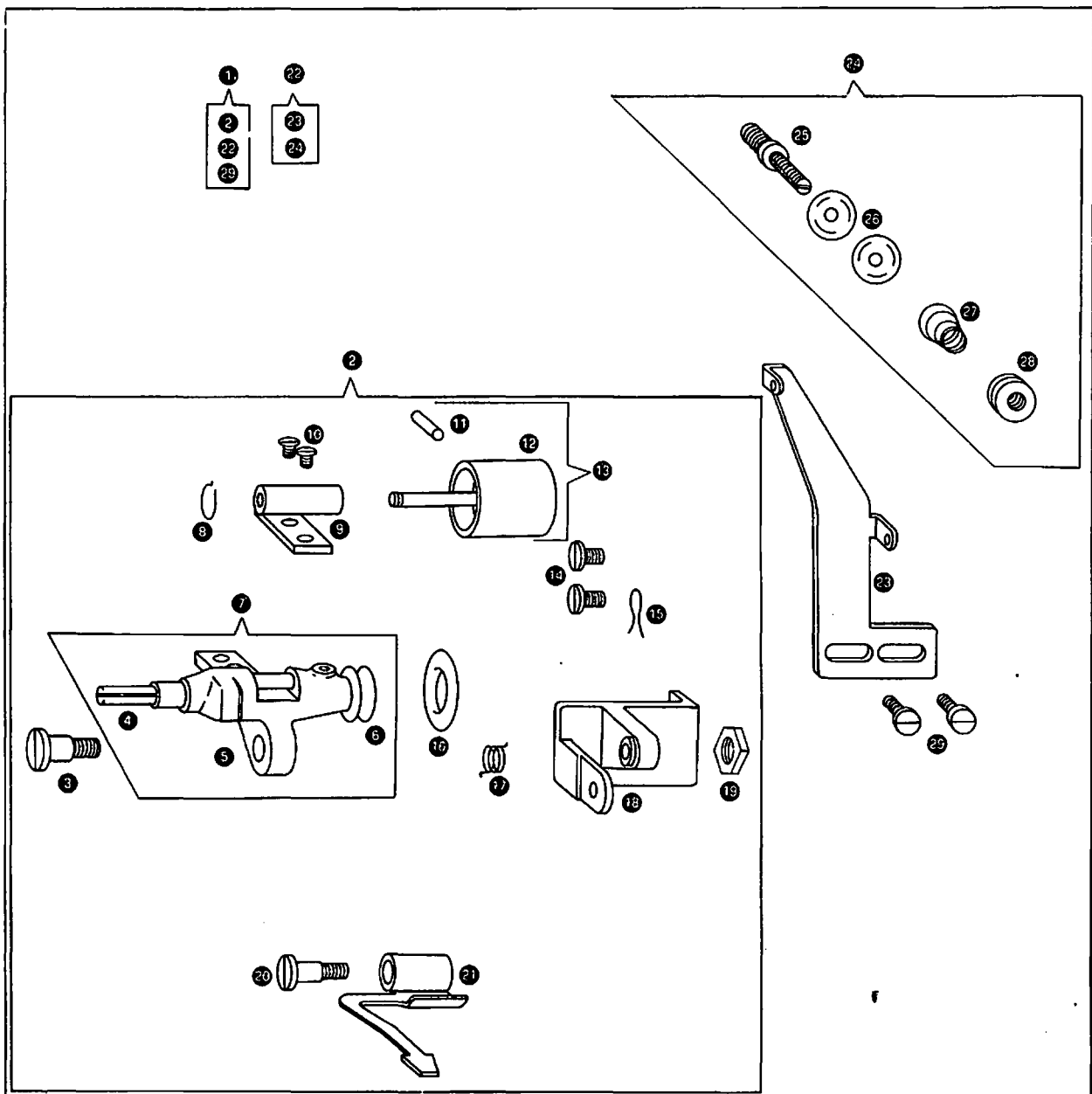
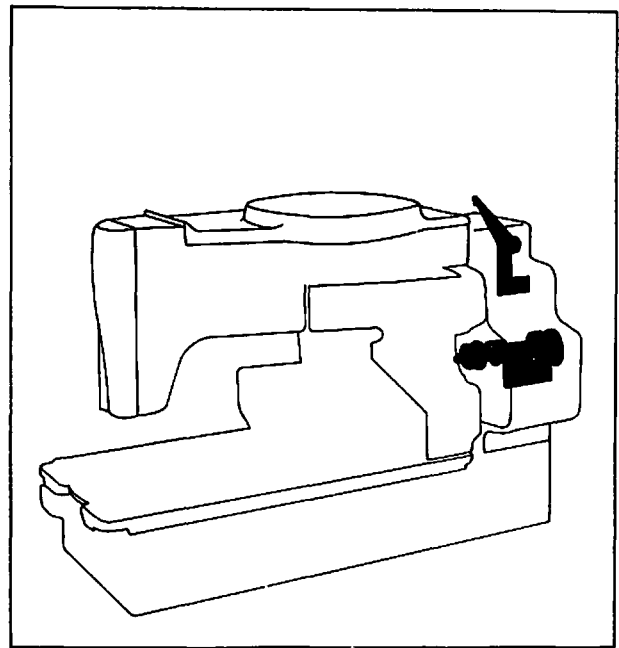
Parts List for 271K12 Machine

Ref. No.	Part No. For Ordering	Description	Amt. Req.
1	107122	Hook Sewing and Bobbin Case complete	
2	107120	Bobbin Case complete	
3	107118	Bobbin Case Cap complete	
4	271787	Bobbin Case Latch with 210734 and 210735	
5	210735	Bobbin Case Latch Fulcrum Pin	
6	271786	Bobbin Case Latch	
7	210734	Bobbin Case Latch Lever	
8	592(805)	Bobbin Case Latch Stop Screw	
9	210736	Bobbin Case Latch Spring	
10	107116	Bobbin Case Cap with 591(806), 106426 and 141514(803)	
11	106426	Bobbin Case Tension Spring	
12	141514(803)	Bobbin Case Tension Spring Regulating Screw	
13	591(806)	Bobbin Case Tension Spring Screw	
14	233028	Bobbin	
15	106190	Hook Gib	
16	271419	Bobbin Case Base	
17	106267	Hook (sewing) with 106190, 141507, 210541, 271471, 271593 and two 141525	
18	271471	Hook Oil Control Screw Stud with 271808	
19	271808	Hook Oil Control Screw Stud Seal Ring (rubber)	
20	271592	Hook Oil Control Screw Stud	
21	271593	Hook Oil Control Screw Stud Pin	
22	502535	Hook Oiling Felt	
23	106189	Hook Sewing with 502535	
24	141525(806)	Hook Gib Screw	2
25	210541	Hook Washer Needle Guard	
26	141507(803)	Hook Washer Needle Guard Screw	
27	244746	Hook Oil Seal Ring (rubber)	
28	141547(830)	Hook Set Screw	2
29	271585	Hook Driving Shaft with 244746 and two 141547(830)	
30	271788	Hook Driving Shaft Oil Packing (wick)	
31	271456	Hook Driving Shaft Bushing (front) (adjustable)	
32	141629(830)	Hook Driving Shaft Bushing (front) (adjustable) Set Screw	
33	271591	Hook Driving Shaft Oil Tube (brass)	
34	271475	Hook Driving Shaft Oil Chain Guard (upper) with 350595(850)	
35	350595(850)	Hook Driving Shaft Oil Chain Guard (upper) Set Screw	
36	271589	Hook Driving Shaft Oil Chain (endless)	
37	271474	Hook Driving Shaft Oil Chain Guard (lower)	
38	50579(805)	Hook Driving Shaft Oil Chain Guard (lower) Screw	2
39	271830	Hook Driving Shaft Bushing (back) Oil Packing (wick)	
40	271586	Hook Driving Shaft Bushing (back)	
41	53569(805)	Bed Leg Extension (adjustable) Lock Nut	
42	141659(805)	Bed Leg Extension (adjustable) Screw	
43	106268	Hook (sewing) with 271419	



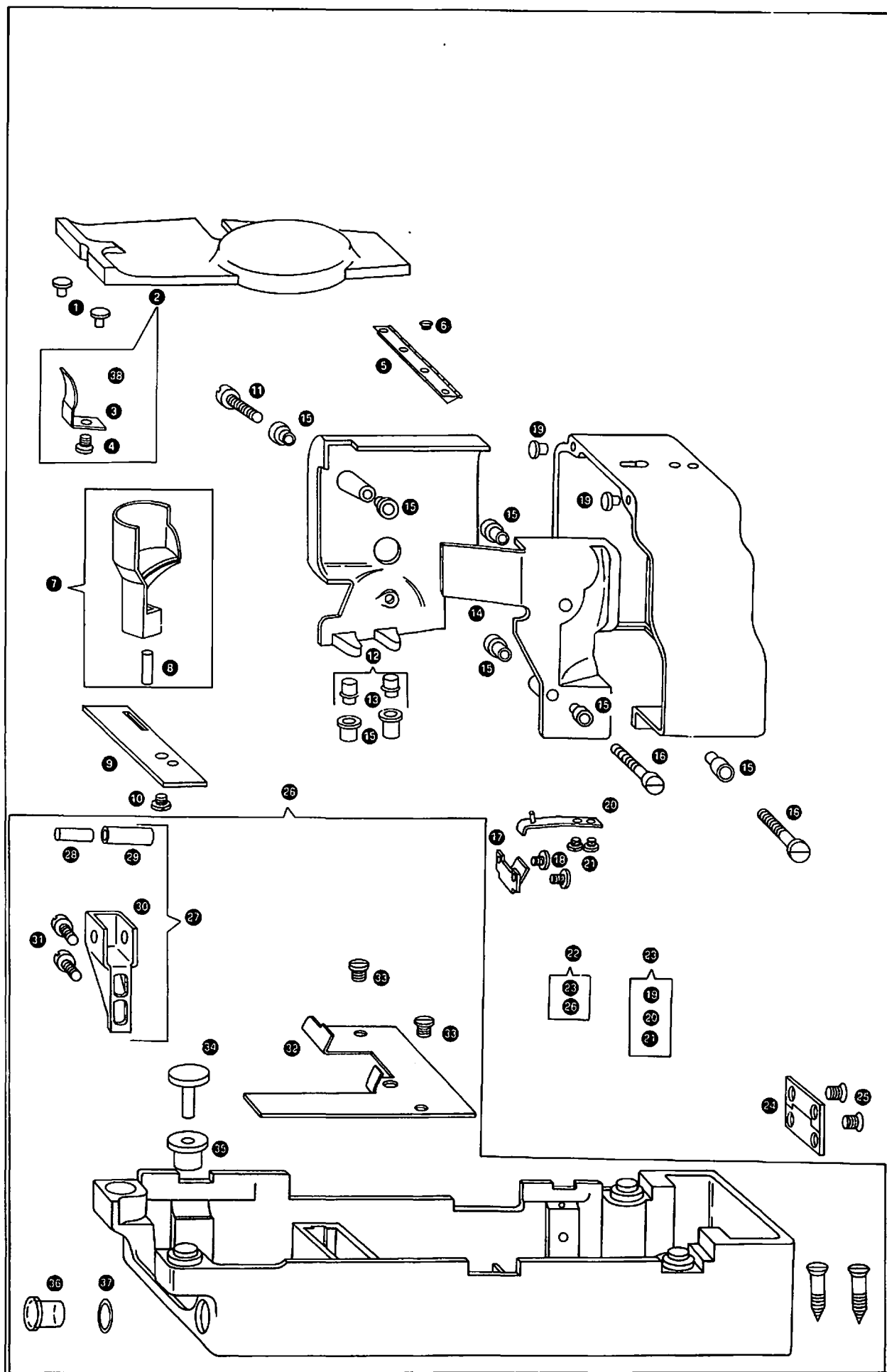
Parts List for 271K12 Machine

Ref. No.	Part No. For Ordering	Description	Amt. Req.
1	271717	Bobbin Winder with Thread Guide complete	
2	271713	Bobbin Winder complete	
3	50356(804)	Bobbin Winder Frame Hinge Screw	
4	235345	Bobbin Winder Spindle	
5	271705	Bobbin Winder Frame	
6	271711	Bobbin Winder Spindle Pulley	
7	271706	Bobbin Winder Frame with 225345 and 271711	
8	239241	Bobbin Winder Pulley Shaft Retaining Ring	
9	271709	Bobbin Winder Pulley Bracket	
10	171(831)	Bobbin Winder Pulley Bracket Screw	2
11	271710	Bobbin Winder Pulley Shaft	
12	271707	Bobbin Winder Pulley	
13	271708	Bobbin Winder Pulley with 271710	
14	160(804)	Bobbin Winder Base Screw	2
15	240245	Bobbin Winder Base Screw Retaining Spring	
16	271798	Bobbin Winder Friction Ring (rubber)	
17	249716	Bobbin Winder Frame Spring	
18	271704	Bobbin Winder Base	
19	1620(819)	Bobbin Winder Frame Hinge Screw Nut	
20	35(804)	Bobbin Winder Stop Latch Hinge Screw	
21	271712	Bobbin Winder Stop Latch	
22	271715	Bobbin Winder Thread Guide with 271948	
23	271714	Bobbin Winder Thread Guide	
24	271948	Bobbin Winder Tension complete	
25	418(804)	Bobbin Winder Tension Screw Stud	
26	2455	Bobbin Winder Tension Disc	2
27	232515	Bobbin Winder Tension Spring	
28	1562(819)	Bobbin Winder Tension Regulating Thumb Nut	
29	792(804)	Bobbin Winder Thread Guide Screw	2



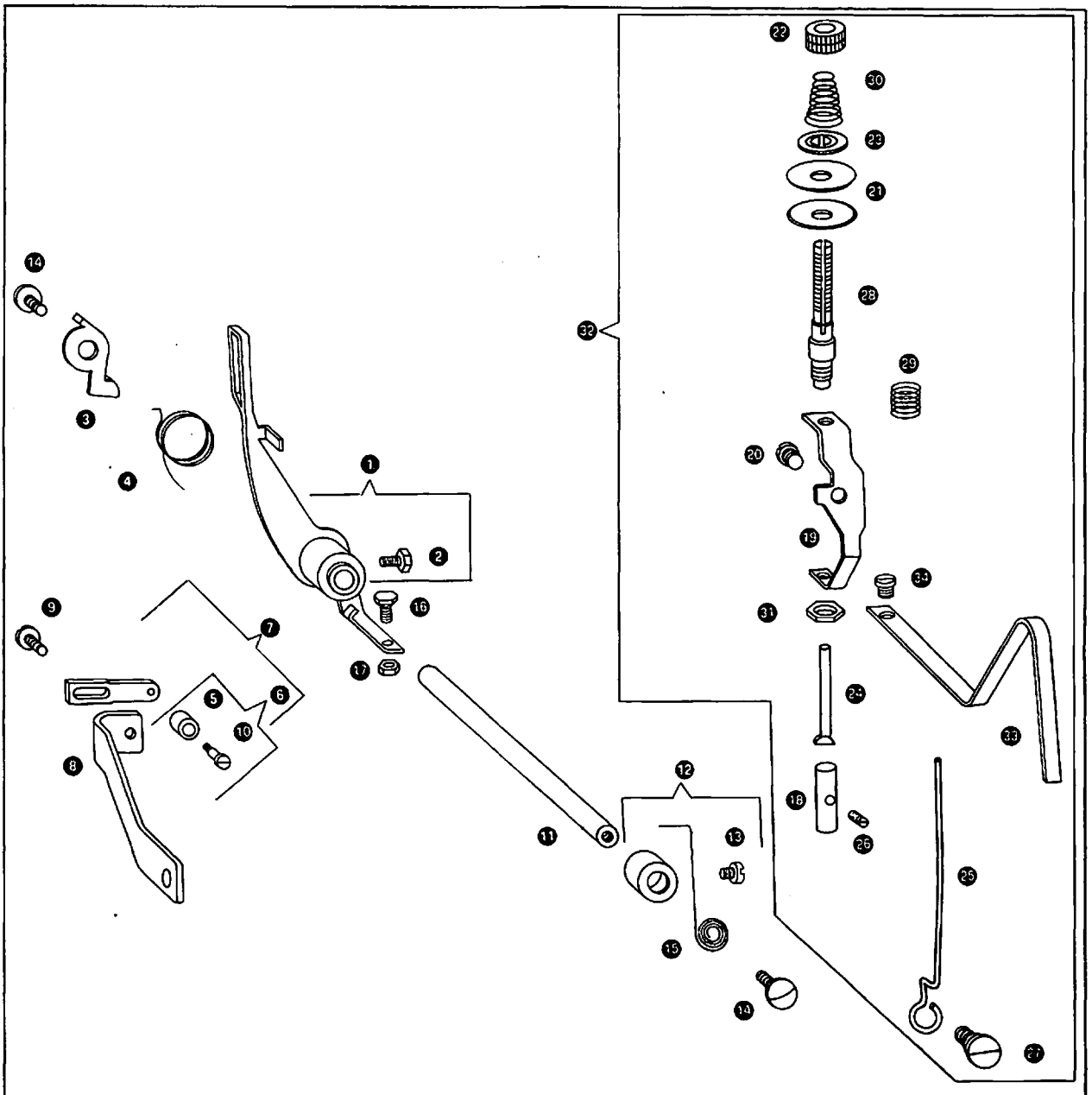
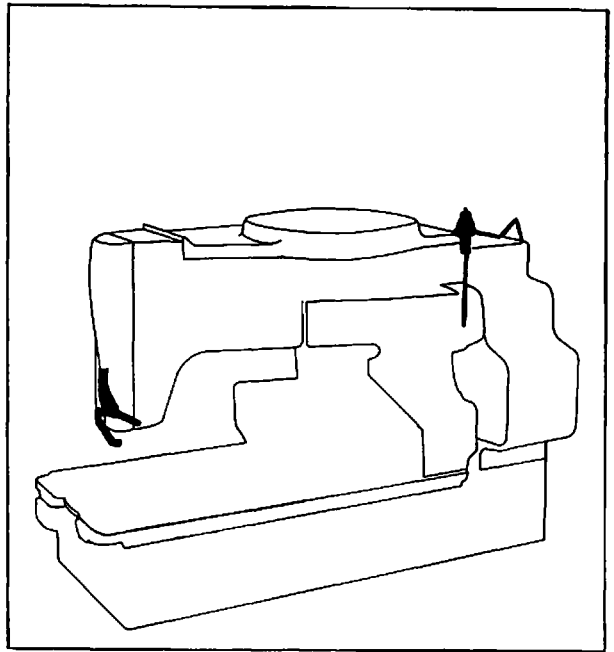
Parts List for 271K12 Machine

Ref. No.	Part No. For Ordering	Description	Amt. Req.
1	228661	Arm Top Cover Cushion (rubber)	2
2	271512	Arm Top Cover with 190(804), 23135 and 271761	
3	271761	Arm Top Cover Lock Spring	
4	190(804)	Arm Top Cover Lock Spring Screw	
5	271514	Arm Top Cover Hinge	
6	934(819)	Arm Top Cover Hinge Screw	8
7	271415	Bed Oil Guard with 249883	
8	249883	Bed Oil Guard Tube (brass)	
9	271416	Clamp Carrier Regulator Slide	
10	1235(806)	Bed Oil Guard Screw	
11	141572(819)	Arm Side Cover (left) Screw	
12	271837	Arm Side Cover (left) with two 271804	
13	271804	Arm Side Cover (left) Position Pin	2
14	271511	Arm Side Cover (right)	
15	271791	Arm Side Cover Insert Cushion (rubber)	8
16	141572(819)	Arm Side Cover (right) Screw	2
17	271752	Belt Guard Lock Spring Catch	
18	176(813)	Belt Guard Lock Spring Catch Screw	2
19	228661	Belt Guard Cushion (rubber)	2
20	271435	Belt Guard Lock Spring	
21	217(805)	Belt Guard Lock Spring Screw	2
22	271726	Machine Base and Belt Guard complete	
23	271718	Belt Guard with 271435, two each 217(805) and 228661	
24	271732	Belt Guard Hinge	
25	389(819)	Belt Guard Hinge Screw	2
26	271721	Machine Base assembly	
27	23162	Machine Hinge Connection Bracket with 271778 and 271779	
28	271778	Machine Hinge Connection Pin (spiral)	
29	271779	Machine Hinge Connection Pin Sleeve (plastic)	
30	271431	Machine Hinge Connection Bracket	
31	50615(819)	Machine Hinge Connection Bracket Screw	2
32	271723	Machine Base Oil Reservoir Cover	
33	203(805)	Machine Base Oil Reservoir Cover Screw	2
34	271762	Machine Base Cushion Cap	
35	271722	Machine Base Cushion (rubber)	
36	243798	Machine Base Oil Level Indicator	
37	243799	Machine Base Oil Level Indicator Oil Seal (neoprene)	
38	23135	Stitch Regulating Gear Chart	



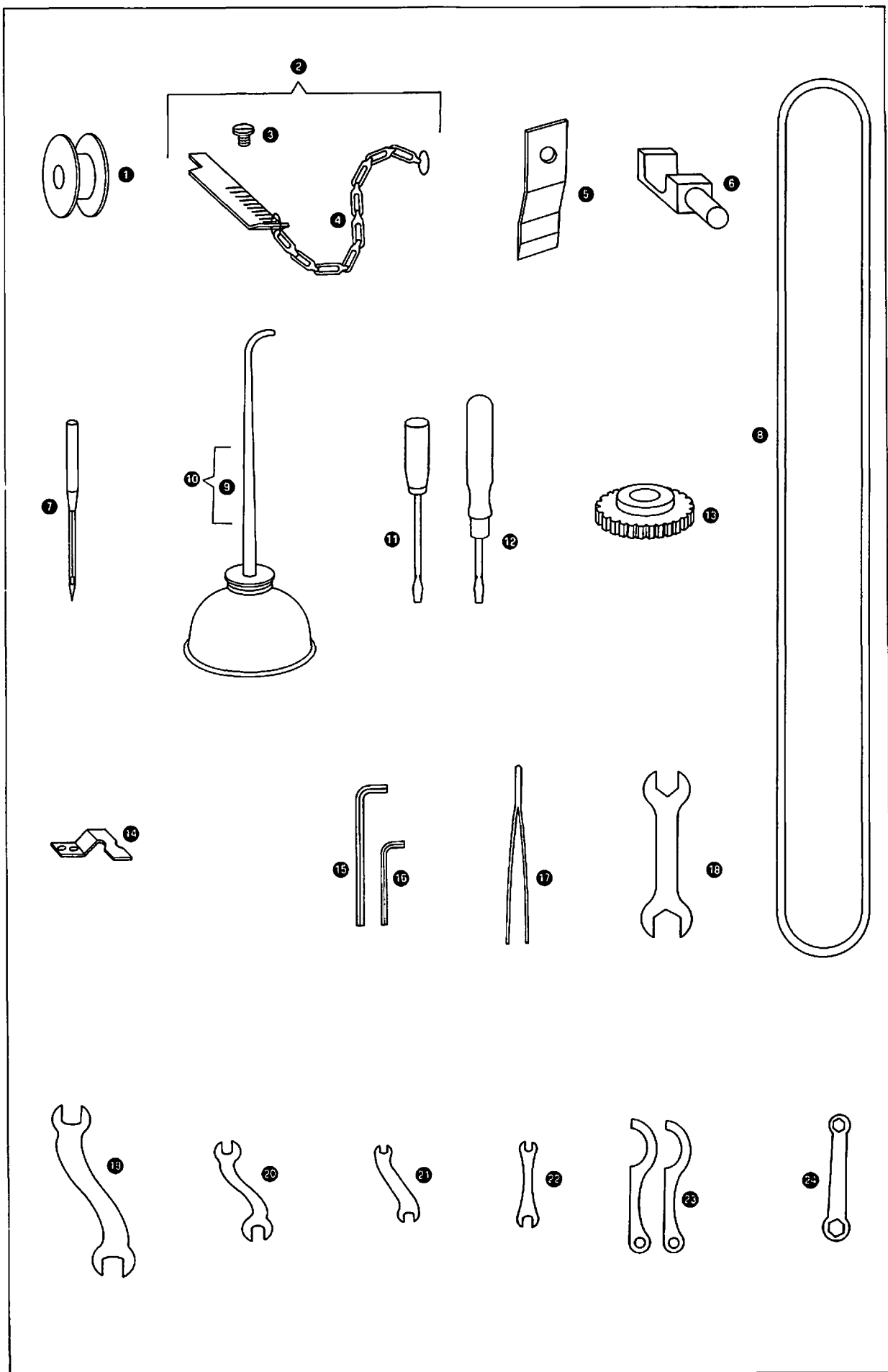
Parts List for 271K12 Machine

Ref. No.	Part No. For Ordering	Description	Amt. Req.
1	271858	Needle Thread Pull-off with 350287(803)	
2	350287(803)	Needle Thread Pull-off Hub Screw	
3	271859	Needle Thread Pull-off Latch	
4	271860	Needle Thread Pull-off Latch Spring	
5	201883	Needle Thread Pull-off Roller	
6	351895	Needle Thread Pull-off Roller with 141661(803)	
7	271980	Needle Thread Pull-off Roller Arm with 351895	
8	271981	Needle Thread Pull-off Roller Arm Bracket	
9	203(819)	Needle Thread Pull-off Roller Arm Screw	
10	141661(803)	Needle Thread Pull-off Roller Screw Stud	
11	271982	Needle Thread Pull-off Shaft	
12	271457	Needle Thread Pull-off Shaft Collar with 141625(803)	
13	141625(803)	Needle Thread Pull-off Shaft Collar Set Screw	
14	1423(804)	Needle Thread Pull-off Shaft Screw	2
15	271983	Needle Thread Pull-off Shaft Spring	
16	350229(805)	Needle Thread Pull-off Stop Screw	
17	1550(809)	Needle Thread Pull-off Stop Screw Nut	
18	271984	Needle Thread Tension (rear) Actuator with 336(806)	
19	271985	Needle Thread Tension (rear) Bracket	
20	161(804)	Needle Thread Tension (rear) Bracket Screw	
21	32012	Needle Thread Tension (rear) Disc	2
22	1560(803)	Needle Thread Tension (rear) Regulating Thumb Nut	
23	32572	Needle Thread Tension (rear) Releasing Disc	
24	39635	Needle Thread Tension (rear) Releasing Pin	
25	271986	Needle Thread Tension (rear) Rod	
26	50057(804)	Needle Thread Tension (rear) Rod Actuator Screw	
27	336(806)	Needle Thread Tension (rear) Rod Set Screw	
28	350399(806)	Needle Thread Tension (rear) Screw Stud	
29	271987	Needle Thread Tension (rear) Secondary Spring	
30	271665	Needle Thread Tension (rear) Spring	
31	1664(805)	Needle Thread Tension (rear) Stud Lock Nut	
32	271988	Needle Thread Tension (rear) complete	
33	271488	Needle Thread Tension Guide	
34	191(805)	Needle Thread Tension Guide Screw	



Accessories for 271K12 Machines

Ref. No.	Part No. For Ordering	Description	Amt. Req.
1	233028	Bobbin	2
2	249698	Gauge for setting length of buttonhole with 200137(819) and 249789.	
3	200137(819)	Gauge Chain and Ring Screw	
4	249789	Gauge Chain and Ring	
5	98733	Knife 3/8 inch	
	98737	Knife 5/8 inch	
	98738	Knife 11/16 inch	
6	271703	Machine Hinge Connection	2
7	Cat. No. 1526	Needles, Chromium finish, three each sizes 12 and 14	
8	271797	Machine Driving Belt (endless) (5/16 inch diameter—46 inches long)	
9	120346	Oiler (copper plated) with 120347	
10	120347	Oiler Spout, 8-1/2 inches long	
11	161295	Screw Driver (plastic handle) (small)	
12	161294	Screw Driver (plastic handle) (large)	
13	271640	Stitch Regulating Gear 40 teeth	
	271643	Stitch Regulating Gear 48 teeth	
	271636	Stitch Regulating Gear 36 teeth	
	271645	Stitch Regulating Gear 54 teeth	
	271641	Stitch Regulating Gear 45 teeth	2
14	271926	Thread (lower) Cutting Blade	
15	239353	Wrench	
16	267242	Wrench	
17	255513	Tweezers	
18	21654	Wrench	
19	255541	Wrench	
20	255540	Wrench	
21	23535	Wrench	
22	249820	Wrench	
23	232935	Wrench	
24	249945	Wrench	



Fittings for 271K12 Machine

Ref. No.	Part No. For Ordering	Description	Amt. Req.
	271847	Clamp Check Arm, 3/8 to 11/16 inch Buttonholes	
	101813	Clamp Check, 3/8 to 1 inch Buttonholes for 101814	
	101814	Clamp Check, (1/16 inch thick rubber mat) complete Nos. 101813, 271405 and two 141601(809) for 3/8 to 1 inch Buttonholes for use with 101816	
	101815	Clamp Check (serrated) 3/8 to 1 inch Buttonholes for use with 101816	
	101816	Clamp Check Holder for use with 101814 and 101815	
	271405	Clamp Check Flat Housing with 1/16 inch thick rubber mat for 101814	
	98731	Knife for 1/4 inch Buttonhole	
	98732	Knife for 5/16 inch Buttonhole	
	98733	Knife for 3/8 inch Buttonhole	
	98734	Knife for 7/16 inch Buttonhole	
	98736	Knife for 9/16 inch Buttonhole	
	98737	Knife for 5/8 inch Buttonhole	
	98738	Knife for 11/16 inch Buttonhole	
	98739	Knife for 3/4 inch Buttonhole	
	98740	Knife for 13/16 inch Buttonhole	
	98741	Knife for 7/8 inch Buttonhole	
	98742	Knife for 15/16 inch Buttonhole	
	23115	Knife for 63/64 inch Buttonhole	
	23164	Needle Plate (narrow needle slot 0.046 inch)	
	271634	Stitch Regulating Gear 30 teeth	
	271635	Stitch Regulating Gear 32 teeth	
	271636	Stitch Regulating Gear 36 teeth	
	271637	Stitch Regulating Gear 36 teeth	
	271638	Stitch Regulating Gear 36 teeth	
	271458	Stitch Regulating Gear 40 teeth	
	271640	Stitch Regulating Gear 40 teeth	
	271459	Stitch Regulating Gear 44 teeth	
	271642	Stitch Regulating Gear 48 teeth	
	271643	Stitch Regulating Gear 48 teeth	
	271641	Stitch Regulating Gear 45 teeth	
	271645	Stitch Regulating Gear 54 teeth	
	271646	Stitch Regulating Gear 60 teeth	
	271647	Stitch Regulating Gear 60 teeth	
	271648	Stitch Regulating Gear 60 teeth	

Fittings for 271K12 Machine

Ref. No.	Part No. For Ordering	Description	Amt. Req.
Thread Unwinder (for two spools)			
	228776	Thread Unwinder (for two spools) complete, Nos. 228766, 228767, 228768, 228770, 228774, two each 150203, 228764, 228769 and three each 150203, 228764, 228769 and three wood screws 7/8 inch, No. 12 R.H.B.	
Miscellaneous Parts used in conjunction with Thread Unwinder			
	27739	Thread Unwinder Thread Cone (wood) (only supplied when specified on order and at an extra charge)	
Motor Mount and Belt Tightener complete			
	151223	Motor Mount and Belt Tightener complete, Nos. 150783, 151066, 151219, 151220, 151221, 151222, two each 9281, 151068, four each 50807(813), eight each 1778(813), 9842 and 126150, for series K-38 (cont. running) Motor, for "V" Belt	
Driving Equipment			
	228909	Clamp Lifting Chain, 36 inch long, with 39575 and 39576	
	250408	Machine Rest (high) with 232992 and two wood screws 1 inch No. 12	
	228757	Treadle complete, Nos. 271(813), 142372 to 14375, 17881, 50581(813), two each 23250, 51074(813) and 67425 (2)	
	228349	Starting Chain complete, Nos. 228333, 228347, 228348, two each 39575 and 39576	
Automatic Mechanical Clamp Lifting Device (Order from Elizabeth)			
	22843	Automatic Mechanical Clamp Lifting Device, Nos. 1670(805), 151490, 151491-002, 151492, 151493, 191496, 151517, 151523, 151524, 151526, 151530, 151547, 151548, 151549, 151571 and two 151525 for 22844	
		Note:	
		No. 22843 has the same component parts as No. 151562 but the Clamp Lift Shaft No. 151549 is specially positioned for Class 271K Machines	
	22844	Automatic Mechanical Clamp Lifting Device with Cover (Power Unit) complete, Nos. 22843, 151574, two 680(819), four each 491(819), 151569, wood screws 1-3/4 inch No. 14 R.H. and eight each 151572 and 151573	
		Note:	
		No. 22844 has the same component parts as No. 151563 but the Clamp Lift Shaft No. 151549 component of assembly No. 22843 is specifically positioned for Class 271K Machines	

